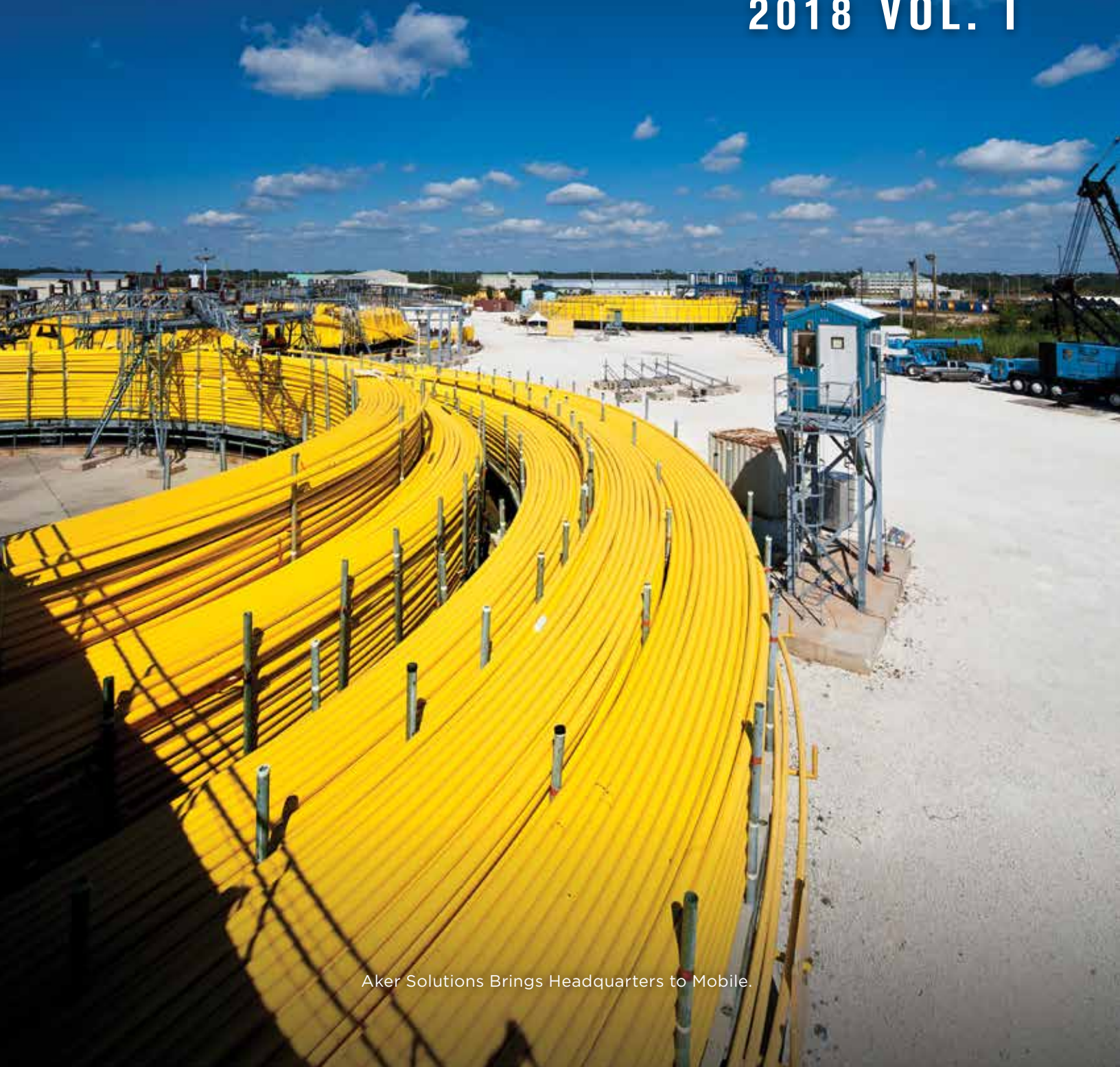


ALABAMA SEAPORT

THE OFFICIAL MAGAZINE
OF THE ALABAMA STATE PORT AUTHORITY

2018 VOL. I



Aker Solutions Brings Headquarters to Mobile.



Page & Jones, Inc.

EST. 1892

GLOBAL LOGISTICS • PROJECT CARGO SUPPLY CHAIN MANAGEMENT

AEROSPACE • AUTOMOTIVE • CHEMICALS • ELECTRONICS • FOOD & BEVERAGE • FOREST PRODUCTS
FURNITURE • GENERAL & BULK CARGO • MACHINERY • STEEL • TEMPERATURE CONTROLLED



Strengthened by Our Network of Agents Worldwide

FREIGHT FORWARDERS • STEAMSHIP AGENTS • CUSTOM BROKERS • AIR CARGO • NVOCC

Executive Office: 52 N. Jackson Street • Mobile, Alabama 36602

Phone: 251-287-8700 • FAX: 251-287-8705 • www.pagejones.com • info@pagejones.com

CHB Lic. #2843 • FMC Lic. #1567

ALABAMA SEAPORT

PUBLISHED CONTINUOUSLY SINCE 1927 • 2018 VOL. I

ON THE COVER:

Aker Solutions increases its investment
in Mobile.

See story on page 4



ALABAMA STATE PORT AUTHORITY

P.O. Box 1588, Mobile, Alabama 36633, USA
P: 251.441.7200 • F: 251.441.7216 • asdd.com

James K. Lyons, Director, CEO

H.S. "Smitty" Thorne, Deputy Director/COO

Larry R. Downs, Secretary-Treasurer/CFO

FINANCIAL SERVICES

Larry Downs, Secretary/Treasurer

Linda K. Paaymans, Sr. Vice President, FINANCE

Pete Dranka, COMPTROLLER

Danny Barnett, Manager, HUMAN RESOURCES

Kevin Malpas, Manager, RISK MANAGEMENT

MARKETING

Judith Adams, Vice President

Sheri Collins, Manager, Public Affairs

Kelly Sims, Manager, Real Estate

Phillip Draughter, Manager, Theodore Operations

OPERATIONS

Bradley N. Ojard, Sr. Vice President, Operations

Bernard Scott, Manager, MCDUFFIE

Scott Wallace, Maintenance Manager, MCDUFFIE

Cliff Melton, General Manager, TERMINAL RAILWAY

Bill Inge, Manager, GENERAL CARGO/

INTERMODAL OPERATIONS

Anna Ward, Manager, TRAFFIC/SALES

Chuck Camp, Manager, LOGISTICS

Jimmie Flanagan, PORT POLICE CHIEF

Lester Davison, TRUCK CONTROL

Capt. Terry Gilbreath, HARBOR MASTER

TECHNICAL SERVICES

Bob Harris, Vice President, Technical Services

TRADE & DEVELOPMENT

Frank Fogarty, Vice President

Parrish Lawler, Manager, CUSTOMER SERVICE

Maria Mendez, Director, LATIN AMERICA SALES &

TRADE DEVELOPMENT

The ALABAMA SEAPORT Magazine has been a trusted news and information resource for customers, elected officials, service providers and communities for news regarding Alabama's only deepwater Port and its impact throughout the state of Alabama, region, nation and abroad. In order to refresh and expand readership of ALABAMA SEAPORT, the Alabama State Port Authority (ASPA) now publishes the magazine quarterly, in four editions appearing in winter, spring, summer and fall. Exciting things are happening in business and industry throughout Alabama and the Southeastern U.S., and the Port Authority has been investing in its terminals to remain competitive and meet the needs of shippers.

CONTENTS

Aker Solutions Increases Presence in Mobile.....	4
SSAB Americas Announces Move to Mobile.....	6
Alabama Oyster Shell Recycling Program.....	9
ASPA 2017 Holiday Reception.....	10
Made In Alabama: Spark Mobile Video	16
Port Calls: Neversink.....	18
Currents.....	19
Pages from the Past.....	23
Of Men and Ships: The Legacy of Álvarez de Pineda, First European on Mobile Bay	24

DEPARTMENTS

Arrivals/Sailings.....	28
Port of Mobile Directory.....	31
Steamship Agencies & Lines.....	34

An Equal Opportunity Employer
ALABAMA SEAPORT (ISSN 1524-8259) is published quarterly by the marketing department, Alabama State Port Authority. The magazine is provided free of charge upon written request from customers and friends of the Alabama State Port Authority. Material contained herein, except when copyrighted, may be reproduced in whole or in part. A credit line "Reprinted from ALABAMA SEAPORT," will be appreciated, and it is requested that a copy of the publication, containing the material used, be sent to Editor, ALABAMA SEAPORT, Alabama State Port Authority, P.O. Box 1588, Mobile, Alabama 36633 U.S.A.

AKER SOLUTIONS INCREASES PRESENCE IN MOBILE

Aker Solutions has successfully operated its umbilical manufacturing facility at Mobile Middle Bay Port for nearly 16 years now. The continued growth and demand that the facility has experienced is evident in the Norweigan manufacturer’s recent decision to increase its investment in its Mobile, Alabama facility, which will serve as Aker’s North American center for delivery of projects, products and services, as well as its primary manufacturing facility in North America.

At the end of 2016, Aker consolidated into five delivery centers at key locations to increase efficiency and better meet customer needs. The company’s goal for the upcoming expansion of the Mobile facility is to increase cost efficiency and competitiveness on a global scale, while simultaneously demonstrating Aker’s continued commitment to the U.S. by retaining the customer focus at its Houston location.

Aker estimates 40-50 employees will relocate to the Mobile location from their current positions in Houston, leaving them with one Houston facility and one Mobile facility to round out their U.S. operations by the end of 2018. The company will also recruit to fill approximately 35 additional positions in Mobile to supplement its current 130 employees



Kay Ivey, Governor of Alabama

ALABAMA STATE PORT AUTHORITY

Horace Horn, Chairman,
Central Region
Term expires July 31, 2019

Joe McCarty, 1st Vice Chair,
Northern Region
Term expires July 31, 2020

Daryl Dewberry, At Large
Term expires July 31, 2019

Alvin K. Hope III, Southern Region
Term expires July 31, 2020

Tim Parker III, Central Region
Term expires July 31, 2018

Algernon "Al" Stanley, Northern Region
Term expires July 31, 2020

Ben C. Stimpson, Southern Region
Term expires July 31, 2019

The Honorable Merceria Ludgood,
President, Mobile County Commission
(Ex-Officio) Term expires July 31, 2018

Bestor Ward, At Large
Term expires July 31, 2018

ALABAMA SEAPORT EDITORIAL STAFF

Judith Adams, Editor-in-Chief
Jennifer Jenkins, Managing Editor
Sheri Collins, Editor-at-Large

EDITORIAL CONTRIBUTORS

Kelsey Davis
Jennifer Jenkins
Taylor Lewis
Leigh Rendfrey
Scott Rye

ART DIRECTION

Sarah Grube

PHOTOGRAPHY

Judith Adams
Sheri Collins

Editorial offices of ALABAMA SEAPORT magazine are located at the International Trade Center, 250 N. Water Street, Mobile, AL 36602. To be added to or deleted from the mailing list, contact the Alabama State Port Authority Marketing Office at 251.441.7001.

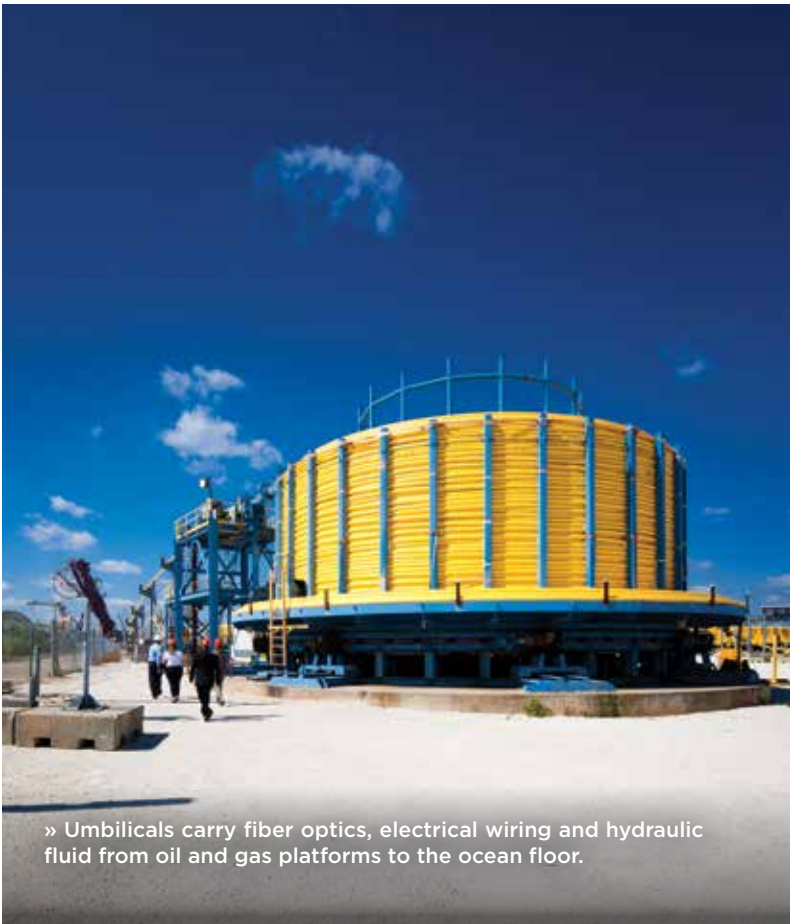
“Through our investment in our Mobile facility and consolidation of our teams, we will be better able to meet the future demands of our customers globally,” said Jonah Margulis, country manager.

In 2002, Aker Solutions strategically chose Alabama State Port Authority’s Middle Bay Port terminal to amplify its services as an international provider in oilfield products, systems and services. Aker combines engineering and technology for drilling, field development and production in the oil and gas industry. “We’re continually pleased with Aker’s growth and investment at the Port of Mobile,” said Jimmy Lyons, director and chief executive officer for the Alabama State Port Authority. “Aker’s ultra-deepwater, high pressure umbilical manufacturing team are valued partners at the port.”

As a world-class manufacturer of steel tube umbilicals, the easy access to the Gulf of Mexico is crucial to Aker’s successful global delivery. All services offered by the Mobile facility ultimately support the subsea infrastructure for oil and gas production, including project management, engineering, procurement, execution and manufacturing.



» Aker’s patented carbon fiber rod technology increases the umbilical axial stiffness for deepwater applications.



» Umbilicals carry fiber optics, electrical wiring and hydraulic fluid from oil and gas platforms to the ocean floor.



» The Mobile Bay location is key to successful global delivery and is specially designed to accommodate the challenges that come with deepwater applications.

**Serving the
Gulf Coast
for Over 20 Years**



Dockside Services

is a fully insured and bonded maritime service company doing business in the Ports of Mobile, Pascagoula, Gulfport, and Pensacola.

Our mission is to provide the most expedient and economical services while in port.

Services include:

- Line Handling Services
- Crew Transportation
- USDA Regulated Waste Disposal
- Local Deliveries
- Agriculture Washing
- Ship Spares Storage & Delivery

International Services include:

- Customs Bonded Carrier & Warehouse
- AirCargo International® Agent

Logistics related services include:

- 24-Hour, 7 Day "Hot Shot" Service
- 5,000 square foot warehouse
- Roll Off Rental & Debris Removal
- Heat/Shrink Wrap
- Rail Car Cleaning
- Container Trucking Service

www.dockside-services.com
251.438.2362 • P.O. Box 122, Mobile, AL 36601

SSAB AMERICAS ANNOUNCES PLANS TO MOVE HEAD OFFICE TO MOBILE

SSAB Americas, a division of global steelmaker SSAB, recently announced plans to relocate the division's head office from Lisle, Illinois, to Mobile, Alabama, a move that will bring 60 jobs to Alabama. Employees in Illinois are in the process of making decisions regarding relocation and the office will transition throughout 2018. Since 2001, the company has operated a steel mill in nearby Axis, Alabama, which employs nearly 600 SSAB employees. The office in Illinois is slated to close in early 2019.

"Mobile is a growing community with a booming economy; we are excited to expand our presence in the area as a trusted employer and community partner," said Chuck Schmitt, president, SSAB Americas. "Moving our team to Mobile will ensure that our senior leaders and support staff work in closer proximity to our front-line operations, where key decisions are made for our business and customers."

SSAB Americas is one of the largest North American producers of steel plate and coil, serving many industrial markets including energy, construction, agriculture, defense and transportation. SSAB Americas' modern steel mills located in Alabama and Iowa have a combined annual production capacity of 2.4 million tons. Both mills utilize a scrap-based, electric arc furnace method to produce steel. The mills are strategically located to cover the industrial heartland in North America, with access to the strategic seaport systems, intracoastal and inland waterways and major railways. The mills also provide downstream services on product, such as coil slitting, blasting and painting, and heat treatments.

SSAB Alabama has one of the world's most advanced quenching and tempering (Q&T) lines with a capacity to produce 300,000 tons of Q&T heavy plate a year.

"SSAB's decision to relocate its North American headquarters to Mobile reflects the success the company has experienced with its Alabama steel mill, which continues to chart a growth path," said Greg Canfield,



Secretary of the Alabama Department of Commerce. "With this headquarters project, SSAB will not only create high-paying jobs but also solidify its presence in the state."

In addition to the two steel mills, SSAB Americas has three cut-to-length facilities located in Houston, Texas; St. Paul, Minnesota; and Toronto, Ontario. With the flexibility to handle both SSAB's steel as well as steel from external suppliers, these locations process coils of various widths, gauges and grades to meet customer-specific requirements with an enhanced service model.

"Corporate headquarters are viewed as the crown jewel of economic development and the ultimate prize for any community," said Mobile Mayor Sandy Stimpson. "SSAB's decision to locate its headquarters in Mobile will create high-paying jobs and add momentum to our downtown resurgence. This announcement serves as the latest proof that we are becoming the most business friendly city in America."

SSAB Americas has been a strong contributor to the Mobile community for many years. In 2015, the company announced a \$110,000 donation to the University of South Alabama for the creation of a scholarship fund. In addition, for more than a decade, SSAB has contributed \$100,000 a year to local schools to support education projects and technology, more than \$1 million to date. The SSAB Foundation for Education also hosts an annual school supply drive called Fill the Bus, donating thousands of school supplies to local students in need every year. SSAB Alabama is also a major sponsor of community groups and projects in the Mobile area.

SSAB Americas is a division of SSAB, a Nordic and US-based steel company. SSAB offers value added products and services developed in close cooperation with its customers to create a stronger, lighter and more sustainable world. SSAB has employees in more than 50 countries, with production facilities in Sweden, Finland and the United States.



John Fayard Moving and Warehousing, LLC

Services

- Intermodal / Trucking Long Haul – Short Haul
- Offering Port, Distribution and Drayage Services
- Cross Docking / Trans-Loading
- Fleet of 400 Plus Dry Van and Flatbed Trailers
- Storage Containers, 20', 40', Office Units and Combo's
- Agent for Allied Van Lines, offering residential and commercial relocation services both international and domestic.



Facility

- 500,000 Plus Square Feet of Warehouse Space
- 24/7/365 Manned Security
- Facility is Fully Fenced
- Security Camera System
- Close access to Interstate 10, only 15 minutes from the Port of Mobile
- 35 Acre Laydown Yard
- 32,000 lb Lift Onsite
- Additional Space to Grow



40 Acre Future Expansion Area



6030 Rangeline Road – Theodore, AL 36582
(251) 443-9125 – www.johnfayardwarehouse.com



OYSTER SHELL RECYCLING PROGRAM SUPPORTS ALABAMA'S REEF HABITAT

In August 2016, the Alabama Coastal Foundation (ACF) received a grant from the National Fish and Wildlife Foundation (NFWF) to establish an oyster shell recycling program for local restaurants. NFWF provided the initial funding for this project as a part of the Gulf Coast Conservation Grants Program.

The Alabama Oyster Shell Recycling Program collects oyster shells from restaurants, which were previously thrown away and taken to landfills, at least three times a week. Oyster shells that are collected through this program go back into Alabama waters to help more oysters grow, provide habitat, limit erosion and improve water quality. The program started collecting shells on October 31, 2016, and in the first year collected 4.6 million shells, which translates to approximately 12 acres of reef habitat for new oysters to grow.

"We have received tremendous support from the Alabama coastal community," stated Mark Berte, executive director, Alabama Coastal Foundation. "When people first hear about the program, they feel good about their participating restaurant and feel that they are part of something that is helping improve our coastal environment. It's a win-win program, which is still going on after the startup grant ended last year, thanks to the donations of people who want to help sustain it."

ACF is contracting with Republic Services to collect shells from restaurants and deliver them to the Alabama Marine Resources Division in Gulf Shores, where they remain outside for six months to cure. When the shells are ready to go back into the water, they are deposited on designated sites in the waters of Alabama. To ensure the success of this project, ACF has formed an advisory committee that decides when and where to place the shells. These recycled shells are the building blocks of newly restored oyster beds, as an oyster shell is the preferred habitat of oyster larvae to settle on as spat to form new reefs.

In addition to food value, oysters provide many important ecosystem services such as:

- Improving water quality: an adult oyster can filter 15 gallons of water per day;
- Providing habitat: oyster reefs provide habitat for fish, shrimp, crabs, birds and other animals;
- Limiting erosion: oyster reefs are natural breakwaters that protect shorelines.

ACF took a phased approach to implement the Alabama Oyster Shell Recycling Program. In the fall of 2016, Phase 1 was launched, which included six restaurants on the causeway.

Phase 2 launched ahead of schedule in winter of 2017, adding 10 more restaurants from downtown Mobile, Gulf Shores and Orange Beach. In April of 2017, the program was opened to all interested restaurants in coastal Alabama, adding an additional 14 restaurants.

"We launched in phases to make sure we had everything worked out logistically for each step of the program," stated Berte. "Our grant said that we had two years to get 30 restaurants to participate in the program and we achieved that goal in less than a year."

In addition, all participating restaurants are now members of the Green Coast Council, a forum for business and industry leaders who practice and promote environmental sustainability principles. Some participating restaurants include Wintzell's Oyster House, Original Oyster House, Tacky Jacks, Half Shell Oyster House, Fisher's at Orange Beach and many more.



SHELLS COLLECTED: 5,417,930

ACRES OF COVERAGE: 13.9

NUMBER OF DUMP TRUCKS FILLED: 86.9

The Alabama Oyster Shell Recycling Program is one of the activities under the Create a Clean Water Future Campaign, a public service campaign to help Alabamians better understand stormwater runoff and its impacts, increase demand for stormwater management programs, and provide resources and tools that empower Alabama residents to reduce polluted runoff in waterways. For more information on the program, to view a complete list of participating restaurants, or to donate directly to the program, visit www.joinACF.org.

ASPA 2017 HOLIDAY RECEPTION



1 Beth Marietta Lyons, Lyons Law Firm
Donald Belle
Rep. James Buskey, Alabama House of Representatives
Chad Grace, Baldwin EMC Trustee

2 Niels Busse, Dan-Gulf Shipping
Eliana McCaffery, Dan-Gulf Shipping
Lamar Finch, TransGroup

3 John Mickler, Reidl North America
Nancy Grace, Reidl North America
Allan Hill, TASD

4 Jimmy Adams, John Fayard Moving & Warehousing
John Fayard Jr., John Fayard Moving & Warehousing
Cindy Weaver, John Fayard Moving & Warehousing
Denson White, APM Terminals

5 Smitty Thorne, ASPA
Jim Darnley, SSA Marine
Buddy Greene, Cooper/T. Smith

6 Mark Newton, G2 Ocean
John Norton, Paul A. Boulo
Monica Bertolino
Janet Fordham
Al Fordham, Leaf River Cellulose

7 Ty Crowder, Baldwin Transfer
Jordan Covington, AST
Logan Boswell, AST
JoAnne Carey
Dave Carey
Tom Adger, Tri-State Maritime
Frank Ward, G2 Ocean

8 Allen Henry III, Henry Marine
Allen Henry, Henry Marine
Bill Sisson, Mobile Area Chamber of Commerce
Wynne Fuller, U.S. Army Corps of Engineers

9 Marcia Amos
Ralph Amos, Southern Intermodal Xpress
Ben Stimpson, ASPA Board Member
Marty Walsh, Chickasaw Container Services

10 Horace Horn, ASPA Board Member
Bestor Ward, ASPA Board Member

11 Tom Rue, Maynard Cooper Gale
Steven Damrich, Damrich Coatings
Cathy Camp
Chuck Camp, ASPA

12 Norman Stockman, Hand Arendall
Timer Parker III, ASPA Board Member

13 Chris Elliott, Baldwin County Commission
Rep. Jack Williams, Alabama House of
Representatives
Nick Lawkis, University of South Alabama

14 Curt Doyle, Geotechnical Engineering &
Testing
Hon. John Lockett, 13th Judicial Court
Edith Loudon, Geotechnical Engineering &
Testing
Mechel Pontis, Mobile Airport Authority
Michelle Melton, Mobile Airport Authority

15 Mark Moran, Drummond Coal
Brad Clark, Norton Lilly International
George Nelson, Parker Towing
Justin Sawyer, ASPA
Jimmie Flanagan, ASPA Port Police

16 Parrish Lawler, ASPA
James Watson, Central Gulf Railcar Service
Kevin Wild, CGR
John Fountain, Crescent Towing
Kelly Fountain

17 Peter Harrison, Norton Lilly International
John Hunter, Dockside Services

18 Jimmy Lyons, ASPA
Randy McMaster, Seaonus

19 Beth Swindall
Nelson Sanchez, U. S. Army Corps
of Engineers
Paul Bradley, Volkert Inc.

20 Harry Fredriksen IV, Glovis America
Trey Fredriksen, H.G. Fredriksen
Co., Inc.
Michael Meador, Meador
Warehousing & Distribution
Steve Gordon, Radcliff / Economy
Marine Services



- 21** Harry Fredriksen IV, Glovis America
Tom Leatherbury, SSA Marine
Andres Aviles, Southern Intermodal Xpress
J. T. Smith, Glovis America
- 22** Duane Poiroux, U.S. Army Corps of Engineers
Lisa Sessions
Rep. David Sessions, Alabama House of Representatives
- 23** Horace Horn, ASPA Board Member
Mitch Mays, Tennessee-Tombigbee Waterway Development Authority
- 24** Stephanie Milbrath, Glovis America
Josie Mock, Inchcape Shipping Services
Tracy Mock, Atlas Ship Supply
Ramona Merritt, Canfor Southern Pine
Polly Wilkins, ASPA

- 25** Charles Tillotson, Seaonus DPH
Frank Fogarty, ASPA
George Nahas, CGR
Parrish Lawler, ASPA
Randy McMaster, Seaonus
- 26** Tadd Willcutt, Crescent Towing
Jerri Kissel, CPA
Terry Gilbreath, ASPA
- 27** Larry Downs, ASPA
John Adams, University of South Alabama
Kellie Hope, Mobile Area Chamber of Commerce
Alvin Hope Jr., ASPA Board Member
Anna Goldman, Warren Averett
Judy Adams, ASPA
Phillip Rivers, Warren Averett
- 28** Pete O'Neal
Cathy O'Neal
Katherine Fuller
Wynne Fuller, U.S. Army Corps of Engineers
David Barr, ASPA

- 29** Paul Jones, Oil Recovery
Marty Stapleton, Mobile Bar Pilots
T.J. Potts, PMT Publishing
- 30** Bruce McGowin, Hand Arendall
Michael Cole, Wilmer & Lee, PA
- 31** Mary Mullins Redditt, MPACT
Mark Redditt, Maynard Cooper Gale
Beth Lyons, Lyons Law Firm
Hon. John Williams, Mobile City Council
Steve McClure, Hargrove Engineers + Constructors
- 32** Taylor Lewis, JJPR
Leigh Rendfrey, JJPR
Kelsey Davis, JJPR
Jennifer Jenkins, JJPR
- 33** Lisa Blakley, ASPA
Ken Robinson, Alabama School of Math & Science
- 34** Nan Steadley, Alabama Department of Public Health
Terri Williams
Tim Williams, TASD
Corolene Anderson, TASD

- 35** Larry Wettermark, Galloway, Wettermark, Everest & Rutens
Sarah Teague
Beth Marietta Lyons, Lyons Law Firm
- 36** David Barr, ASPA
Bo Argiro, ASPA
Bernard Scott, ASPA
Michelle Barlow, ASPA
- 37** Mike Sims, TASD
Kelly Sims, ASPA
Danny Barnett, ASPA
Corolene Anderson, TASD
Mike Russell
Dave Rice, TASD
Sarah Rice
Darrell Lynd, TASD
Misty Lynd
Tim Williams, TASD
Terri Williams
Kevin Hamilton, TASD
Ginger Hamilton

**Cowles, Murphy, Glover
& ASSOCIATES**
A Full Service Engineering Firm

PERFORMANCE • RELIABILITY • EXPERIENCE

Cowles, Murphy, Glover & Associates, a full service engineering firm, offers services for marine terminals, liquid bulk terminals, material handling facilities and complete plant design. The engineers at CMG are ready to make your next engineering project a success.

457 St. Michael Street
Mobile, Alabama 36602
Phone (251) 433-1611
Fax (251) 433-1411
www.cmg-a.com

Grain Terminals



Terminal Rail Systems



Liquid Bulk Terminals



Coal Terminals

PORT SOLUTIONS

APTIM has nearly 60 years of ports and harbors experience. From the Pinto Island Terminal in Mobile Bay to one of the world's largest port equipment procurement projects in South Korea, APTIM is a global leader in designing, building and maintaining critical port infrastructure. We partner with our clients in all aspects of their projects to provide comprehensive port solutions.

BULK, LIQUID BULK AND CONTAINER TERMINALS
BULK MATERIAL HANDLING
CONTAINER EQUIPMENT PROCUREMENT AND INSPECTION
PROGRAM AND CONSTRUCTION MANAGEMENT
DREDGE MATERIAL MANAGEMENT AND BENEFICIAL RE-USE
VESSEL NAVIGATION AND MOORING
SHORELINE PROTECTION AND SAND MANAGEMENT

With APTIM, Expect the Extraordinary.



THE PERFECT HOME PORT IN DOWNTOWN MOBILE

At Candlewood Suites® hotels, we offer a more casual kind of stay, including all of the comforts and conveniences you need to be at your best while on the road.

CORPORATE SALES – 251.690.7818
CANDLEWOODSUITES.COM/MOBILEDOWNTOWN





SPARK MOBILE VIDEO BRINGS NEW MEANING TO OUTDOOR ADVERTISING

Started in 2002, Spark Mobile Video gives a new meaning to digital outdoor advertising. Located in Fairhope, Alabama, Spark offers a large selection of mobile digital signage and video mobile billboards. Video trucks from Spark can display an unlimited number of digital advertisements or recorded video clips, all featuring remote content administration and super bright outdoor grade LED displays.

“We have always manufactured specialty truck bodies used for advertising and promotion,” stated Robert Tarabella, managing partner, Spark Mobile Video. “Our original trucks had mechanical advertising systems which used printed posters that either rotated to show three different ads, or scrolled up and down with an internal backlight, but now we only offer LED displays, like digital billboards.”

By 2006, Spark had trucks operating in more than 100 cities in the United States. In 2015, their first digital video trucks were introduced and all mechanical models were discontinued. Now, Spark offers 10 different video truck body models with LED screen sizes ranging from 4 feet high by 6 feet wide to 8 feet wide by 18 feet wide. Although the products are mainly sold in the U.S., the company has shipped to Europe, Africa and Asia.

“Spark digital video trucks and Spark cartop displays offer business owners a highly effective way to promote their brands,” Tarabella said. “If financed, the monthly payment for a new Spark truck is usually much less expensive than the cost of renting billboard ad space in almost any city. Plus, Spark truck owners control all of the ad space on their

trucks, versus sharing space with many other advertisers on digital billboards.”

The truck bodies are designed entirely in Alabama, with aluminum body components made in the U.S. and assembled at the facility in Fairhope. The large LED screen systems are made in China, and each screen is modular, which allows Spark to respond to customer requests for different size and shape screens. While the truck chassis is being manufactured by Ford and other suppliers, Spark is busy manufacturing the body. Simultaneously, the LED screens are manufactured in China, with the goal being the truck chassis, body, screens and power system all arrive for assembly at the same time.



The most popular 2018 model has screens that measure 5 feet high by 13 feet wide on the sides, and 5 feet high by 7 feet wide on the back. Tarabella said the demand for this product is growing.

“Every time we deliver a video truck to a new city, we begin to receive inquiries from surrounding areas within a few months,” Tarabella said. “When you see a giant video screen sitting next to you at a red light, it gets your attention. And, as costs for the technology drops, we can reduce pricing, which will allow more business owners to benefit from this kind of advertising tool.”

All sales go through the Fairhope office. Tarabella explained that most customers choose a model based on their experience seeing one on the road, or by reviewing photos and videos on the company website. Turnaround time is around 100 days from the customer order to the overall completion. Financing is available from a variety of sources. For more information, visit the website at sparkmobilevideo.com.



KEYPORT WAREHOUSING

“Moving Companies Forward”

- Over 1 Million Square Feet of Warehousing
- Foreign Trade Zone
- ½ Mile From I-10
- 20 Minutes From Port of Mobile
- Cross Docking/Trans-Loading Services
- Pick & Pack/Mailing Services
- RFID Bar Coding Capabilities
- Fleet of Trucks, Vans and Flatbeds
- Container Stuffing/Stripping
- Order Selection/Fulfillment
- Kitting/Packaging

30427 County Rd 49 North . P O Box 500 . Loxley AL 36551-0500
Tel 251.964.4607. Fax 251.964.4614 . www.keyportwarehousing.com

PORT CALLS: THE SOUTHEASTERN CAVE CONSERVANCY, INC. – NEVERSINK



Just north of Scottsboro, Alabama, lives the scenic beauty of Neversink, a 16-story, open-air pit visited by cave explorers and photographers from all over the world. With a mouth of 40 feet in diameter and a 162-foot drop, the pit requires the most experienced of explorers to use vertical caving skills to descend into its depths. Largely known for its breathtaking views and rigorous 30-minute hike, you must be trained to use specialty equipment to safely descend to the floor and see the view from below.

This pit is considered by southeastern cave explorers to be the classic pit and among the most photographed cave of its kind in Tennessee, Alabama and Georgia. While it's carpeted with rare and endangered ferns, Neversink also showcases waterfalls during spring showers and ice sheets during winter nights – making for the perfect sight anytime of year.

Currently sitting on 32 acres of land, this natural wonder remains in pristine condition through the protection of the world's largest land conservancy solely dedicated to cave and karst conservation. Since July 1995, Neversink has been owned and protected by The Southeastern Cave Conservancy, Inc. (SCCi), a nonprofit 501(c)(3) conservancy dedicated to cave acquisition, conservation and management. The SCCi formed in 1991 with a dozen cavers in Atlanta who were interested in caves and cave conservation. Twenty-five years later, The Southeastern Cave Conservancy has nearly 1,100 members from around the country who support their mission of protecting these environments.

Executive Director Ray Knott said, "Caves and karst features like Neversink are fragile resources. They have taken millennia to form and can take the same time to repair – if ever. While we encourage responsible 'Leave No Trace' visitation, our first and foremost responsibility in protecting these places is to future generations. Acquisition and stewardship is expensive. Our success is only due to a group of dedicated members and donors who believe in cave conservation."



The conservancy currently protects more than 170 caves and 31 preserves across six states in the southeast region. Their mission is to conserve caves, preserve areas of attraction, provide recreational access and opportunities, protect cultural and biological resources and support scientific research. Across these protected caves and preserves, the SCCi tends to nearly 4,000 acres of land across the southeast region.

Not only is Neversink a beautiful place to explore, but it also provides a water source through a spring above the pit. This spring is the only reliable water supply for a home at the bottom of the mountain. The SCCi was able to make arrangements with the person using the spring to let SCCi protect the property and the person to be guaranteed the water rights. This purchase was completed on December 5, 1995, at a total cost of a little over \$51,000.

For more information on The Southeastern Cave Conservancy, Inc. or visit Neversink <http://www.scci.org>.

CURRENTS



THE NAVY LEAGUE AND PORT HOST MARDI GRAS SHIPS

The Navy League of Mobile and the Alabama State Port Authority welcomed this year's Mardi Gras Ship, the USS PHILIPPINE SEA, at the Authority's Pier 2 Terminal. The USS PHILIPPINE SEA (CG 58) is a Flight II Ticonderoga-class guided missile cruiser homeported in Mayport, Florida.

The ship arrived to a welcoming celebration February 9, featuring local high school JROTC units, the Murphy High School Band, the Azalea Trail Maids, USS ALABAMA Crewmates and local dignitaries.

The USS PHILIPPINE SEA (CG-58), which operates under the motto "Eternal Vigilance," is in active service in the U.S. Navy. She is named for the Battle of the Philippine Sea during World War II and is the second ship to bear the name. She has completed multiple deployments as part of Operation Enduring Freedom since 2001. The ship measures 567 feet in length with a beam of 55 feet, reaches speeds of 32.5 knots, and features extensive armament and ability to carry helicopters.

The U.S. Coast Guard Cutter, USCGC JACOB POROO, was also in port visiting Mobile for Mardi Gras February 9 through February 12. The newly commissioned ship, moored at GulfQuest National Maritime Museum, is the second Sentinel-class Fast Response Cutter (FRC) assigned to Pascagoula, Mississippi. The ship measures 154 feet in length with a beam of 25 feet, reaches speeds of 28+ knots and has a range of 2,500 nautical miles. The FRCs are replacing the 1980s-era 110-foot patrol boats and are designed for multiple missions, including drug and migrant interdiction; ports, waterways and coastal security; search and rescue; and defense readiness.

The Navy League of Mobile also hosted the Officers and Sailors of the USS MANCHESTER (LCS 14), who were in Mobile to prepare for the ship's final transfer to the U.S. Navy and to enjoy in the nation's oldest Mardi Gras celebration. The Manchester is the 12th littoral combat ship to be delivered to the Navy and the seventh of the Independence variant to join the fleet. The Independence variant is manufactured in Mobile by Austal USA.

During the final days of the Mardi Gras season, both the USS PHILLIPINE SEA and the USCGC JACOB POROO hosted tours for the public.



» Mayor Sandy Stimpson presents a welcoming plaque to Captain Pete Nilson, Commanding Officer, USS PHILLIPINE SEA.

LEADERSHIP ALABAMA TOURS PORT OF MOBILE

The 2018 Leadership Alabama class toured the port of Mobile aboard the Perdido Queen on January 13.



- 1 Ryan Harkins, PARCA
Ken Kitts, University of North Alabama
- 2 Robert Earl Kelly, Kelly Construction
Hollie Cost, City of Montevallo
- 3 Tom Methvin, Beasley Allen
Russell Vandeveld, EBS Services LLC
Art Tipton, Southern Research
- 4 Tony Fargason, Children's of Alabama
Eric Jack, UAB
Mark Pugh, CDG Engineers & Associates Inc.

- 5 Jonathan Porter, Alabama Power Co.
Brian Willman, Regions Bank
- 6 Carl Cunningham Jr., Mobile Kappa League
Shanta Owens, Jefferson County District Court
Peter Selman, Baptist Medical Center South
- 7 Leadership Alabama Class of 2018

TENNESSEE RIVER VALLEY ASSOCIATION NAMES NEW BOARD MEMBERS

The Tennessee River Valley Association welcomed four new board members: Kenneth Allen of White Plains, Kentucky; A.D. Frazier of Mineral Springs, Georgia; Jeff W. Smith of Knoxville, Tennessee; and James “Skip” Thompson of Decatur, Alabama. The board members were confirmed by the U.S. Senate and were sworn in during December. Formed in 1967, the Tennessee River Valley Association and its Tennessee-Cumberland Waterways Council promotes commercial navigation as a catalyst to economic growth in the Tennessee and Cumberland River Valleys.

PREMIER PROJECT CARGO MOVEMENT IN DECEMBER

In December, heavy lift project cargo pieces moved through the Port. Contract Fabricators, Inc. in Iuka, Mississippi, manufactured the heavy lift pieces, which will be used in the oil and gas industry in Malaysia.

The heavy lift pieces were transported via barge from Mississippi to Mobile and then shipped on the BBC Weser to Malaysia. The stevedore was Premier Bulk Stevedoring. Nord-Sud Shipping was the agent. The barge company was Mammoet.



GIRL SCOUTS VISIT MUDDY CREEK PARK

The Girl Scouts of Southern Alabama Scout Service Unit 826 hiked the Muddy Creek Interpretive Trail in late November. Twenty-four scouts, family members and their troop leaders, Ashley Turton and Anna Marie Phelps, explored the 200-acre management area.

The Muddy Creek Management Area has a 2.3 mile-long trail, a beaver pond, wildlife nesting areas, and interpretive signs identifying indigenous plant species common to the area. Muddy Creek also has both water bottom and upland wetlands, longleaf pine and is home to two State Champion Trees – the largest Slash Pine and the largest Pond Cypress trees in the state. The Muddy Creek park is owned and managed by the Alabama State Port Authority and is open to the public during daylight hours.





*Mexico—U.S. Service
It's like tracks across the Gulf.*

CG RAILWAY
INCORPORATED
877.606.2477 | cgrailway.com



U.S.S. SPRINGFIELD VISITS MOBILE'S MARDI GRAS

Not literally but certainly figuratively, there is an umbilical cord linking the carefree carnival called Mardi Gras to the port, the waterfront, the sea. The association is quite distinctive. Mull over it for a minute and you'll see.

In the first place, how else but by water can that mirthful Lord of Misrule named Felix III get to his favorite merrymaking city? Every year on the Monday before Fat Tuesday, of course, he comes from his legendary Isle of Joy to take charge of all activity in Mobile and it's a water route that takes him up Mobile harbor to a disembarkation point at the foot of Government Street.

In the second place, one of the outstanding features of the annual Mardi Gras observance is the traditional presence in port of some ship of the United States Navy — in some years, more than one.

This year's Mardi Gras naval visitor, for example, turned out to be one of the most outstanding ever, the U.S.S. SPRINGFIELD (CLG-7), a large guided missile cruiser serving as the flagship for Vice Admiral Benedict J. Semmes, Jr., commander of the U.S. Second Fleet based at Norfolk, Virginia.

It's no longer the case, but Mardi Gras' direct connection with the waterfront was demonstrated for many years when the



*This year's Mardi Gras naval visitor:
the U.S.S. SPRINGFIELD.*

Coronation of the Queen, the central highlight of the carnival celebration, was a traditional outdoor ceremony held on the wharves.

And over the years, who could possibly guess the number of parades and individual floats that have had an aquatic or seafaring theme?

Just as the Port of Mobile is the central economic force of Alabama's only seaport, Mardi Gras is an important economic facet of the city where mystics were born. Expenditures for the trappings of carnival funmaking — putting on the many parades and balls, purchase of tons of throwaways for the float riders, investments in dresses, gowns and costumes — run high, indeed. An immeasurable amount of outside money flows into Mobile, too, as visitors from around the country

flock into town to have a fling at the merrymaking.

It happens to be sort of a tradition at Mardi Gras to go down to the State Docks and go aboard the Navy ship in port.

Visitors aboard the SPRINGFIELD this year will see a ship that has undergone an amazing metamorphosis from a World War II light cruiser to one of the Navy's most modern instruments of missile warfare.

Back in the closing months of World War II, SPRINGFIELD participated in the final offensive of the war against the Japanese mainland, operating in anti-shipping raids and coastal bombardment. For several years, she languished in reserve status, but by March, 1960, she was converted and re-commissioned in her new role. From then, she served as flagship




16



PORT OF MOBILE


FEBRUARY 1970

17

Mardi Gras ships visit the Port of Mobile in the 1970s.





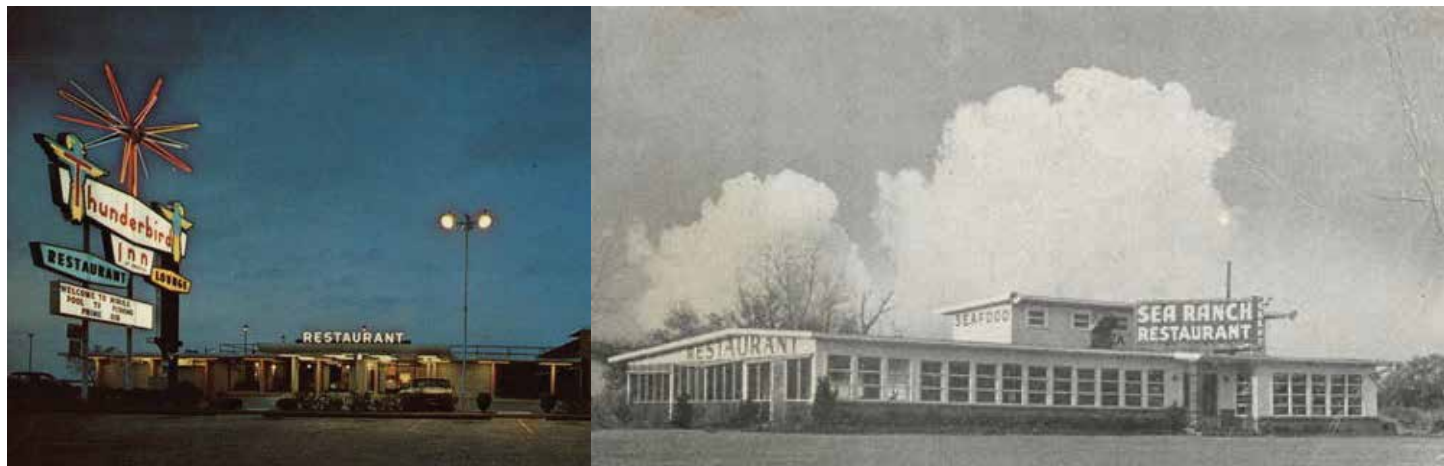
**ANYTIME
ANYWHERE**
Diving & Salvage

www.leadiving.com

Office: 251.432.4480 • Immediate Response: 251.379.4831 • leadiving@bellsouth.net
Post Office Box 314 • Mobile, AL

A.B.S. CERTIFIED • JONES ACT INSURED

THE LEGACY OF ÁLVAREZ DE PINEDA, FIRST EUROPEAN ON MOBILE BAY



» The Mobile Causeway was a Midcentury hotspot, with establishments like the Sea Ranch Restaurant and the Thunderbird Inn.

At the head of Mobile Bay runs a four-lane ribbon of concrete first completed in 1927. Today, the road bears the name “Battleship Parkway,” so named in honor of the presence of the ex-USS ALABAMA (BB 61), but the connector is better known simply as “the Causeway.” Before the elevated Interstate 10 bridge was opened to traffic in 1978, the Causeway offered the only way for vehicles to get from one side of the bay to the other under their own power. Prior to construction of the Causeway, commuters and travelers relied on bay boats to transport them and their vehicles across the bay.

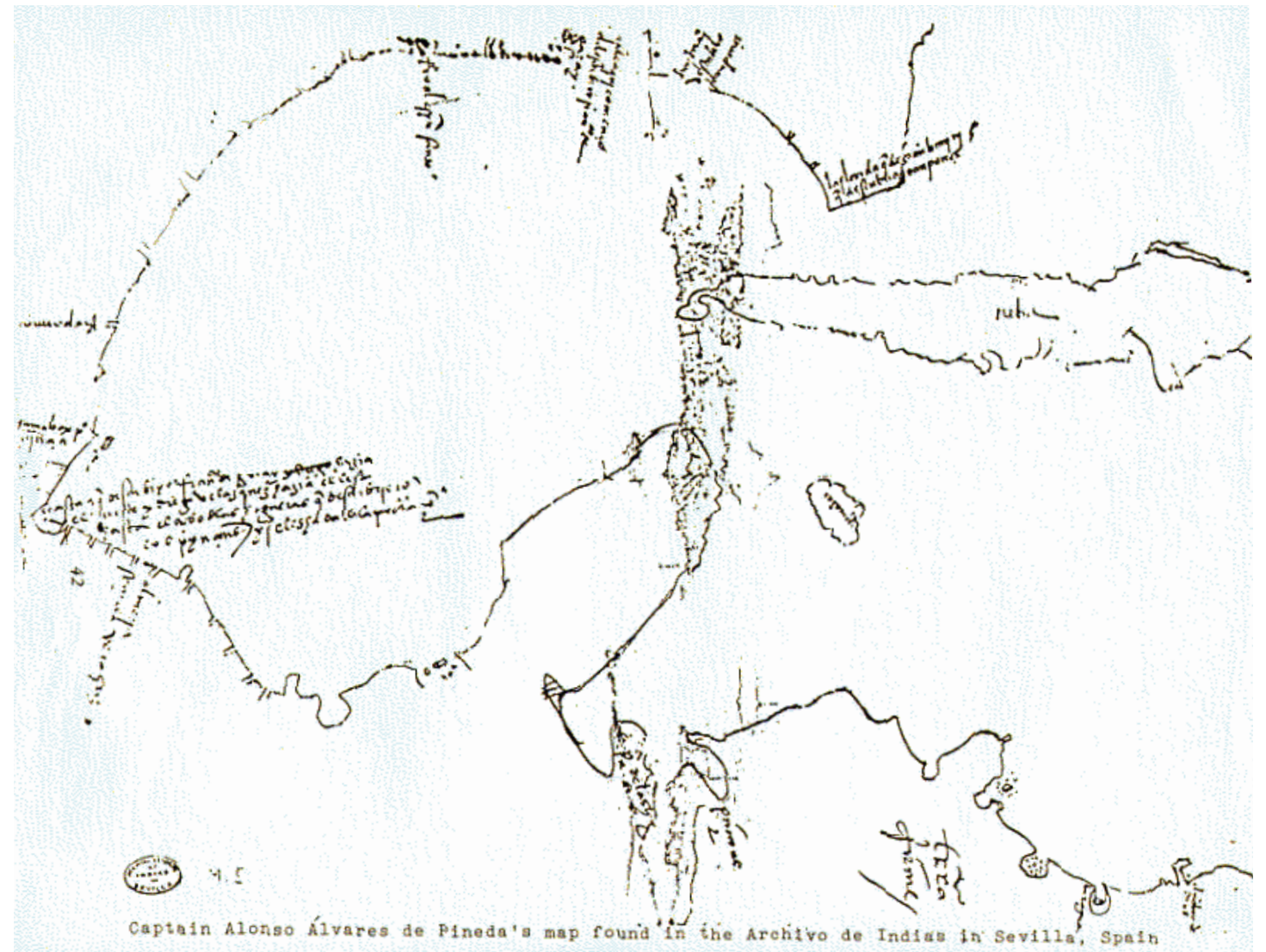
During its heyday, the Causeway was hopping: a major thoroughfare lined with restaurants, clubs and bars, with names like the Silver King Restaurant, the Sea Ranch Restaurant and the Thunderbird Inn, featuring local seafood, cocktail lounges, live entertainment, stunning views of Mobile Bay and miles of neon lighting. What was missing were residences and a sports club offering quick access to the waters of the bay and delta.

A driver might be forgiven for missing the faded lettering on concrete blocks that reads “Pineda Island,” an unassuming entrance set back on the north side of the road toward the eastern end of the Causeway.

No one who has driven or ridden across the Causeway, however, can fail to notice the hulking ruins of what was planned as a futuristic development envisioned by a transplanted New Yorker named George “Red” Wilkinson and renowned Chicago architect Bertrand Goldberg.

But who was Pineda for whom the development was named? Little is known of Spanish explorer and cartographer Alonso Álvarez de Pineda before he entered historical records in 16th century Jamaica, then a Spanish colony. It will be recalled that the Spanish stumbled upon the New World by accident when Italian explorer Cristoforo Colombo (Anglicized as Christopher Columbus) was dispatched by King Ferdinand and Queen Isabella, the monarchs of Aragon and Castile, respectively, to find a westward route to the “Indies” in 1492. In 1519, the Spanish Governor of Jamaica, Francisco de Garay, commissioned Álvarez de Pineda to mount an expedition to find a direct route to the “South Sea,” as the Pacific was then called.

De Garay outfitted Álvarez de Pineda with four ships and a company of 270 men to carry out a voyage of discovery between the areas in Florida explored by Ponce de León in 1513 and those explored in the Yucatán on behalf



» The planned futuristic community of Pineda Island was named for the 16th century explorer who first mapped the Gulf of Mexico, and who is credited with being the first European to see Mobile Bay.

of Velázquez de Cuéllar, the Governor of Cuba in 1517 and 1518. Álvarez de Pineda was to make a map of his discoveries, and though inaccurate by today’s standards, the result was the first map of the Gulf of Mexico.

The expedition weighed anchor in late March 1519. Unfortunately, no first-person account of the journey by Álvarez de Pineda or Governor de Garay has been discovered. What we do have is the map created by Álvarez de Pineda, an account of contact with his party by a member of another expedition in Mexico, and a land grant issued in 1521 to de Garay, giving him possession of lands explored in his name.

Álvarez de Pineda sailed from Jamaica via the Yucatán Channel and then north into the Gulf until the fleet sighted Florida. The vessels sailed along the coast, searching for the passage believed to separate Florida from the mainland. Of course, no such passage exists, and the expedition was able to determine that Florida was not an island, as had been reported by Ponce de León.

The ships made their way along the northern Gulf Coast, and Álvarez de Pineda is credited with being the first European to see the coastal areas of what are today the states of Alabama, Mississippi, Louisiana and Texas, which the explorer named “Amichel.” On or about June 2, 1519, the expedition encountered the outflow of a strong river. The explorers reportedly sailed about 18 miles into a large bay, encountering a number of native villages on its shores.

The river Álvarez de Pineda named “el Río del Espíritu Santo,” the River of the Holy Spirit. Historians argue as to what river this might have been, and which bay, with some contending that it was Mobile Bay and the Alabama River that Pineda described on his map. Others argue that such a mighty river only could have been the Mississippi River, and some maintain that the large bay was Galveston Bay. The Alabama Historical Association sought to put an end to the argument by creating and placing a historical marker on the Causeway in 2008 declaring Mobile Bay to



be Álvarez de Pineda's "Bay of the Holy Spirit." Whatever the case, there is general agreement that Álvarez de Pineda sighted Mobile Bay and Pensacola Bay and likely explored them both during his voyage.

Whether Álvarez de Pineda's "Bay of the Holy Spirit" was Mobile Bay, the mouth of the Mississippi or some other bay along the Gulf Coast may never be known, but he is honored in what is called Pineda Island (which also appears as "Big Island" on local maps), bounded by the Blakeley River to the east, the Apalachee River to the west and which, south of the Causeway, fronts Ducker Bay and Bay John.

Back in the early 1950s, developer Wilkinson saw in Pineda Island the community of the future—a beautiful setting minutes from downtown Mobile, an island where "trade winds forever blow," as one hyperbolic copy writer enthused. Architect Goldberg, Harvard trained and a student of the inimitable Mies van der Rohe, was an up-and-coming Chicago architect who already had developed two "complete city" plans: North Kansas City, Missouri, and Calumet City, Illinois. Pineda Island was his third. Planning for Pineda Island began about 1952, with construction of this city of the future beginning in 1955. Pineda was to be a "satellite development," rather than a suburban one, Goldberg said, explaining that the former added to the resources of the nearby metropolis rather than draining them as the latter did.

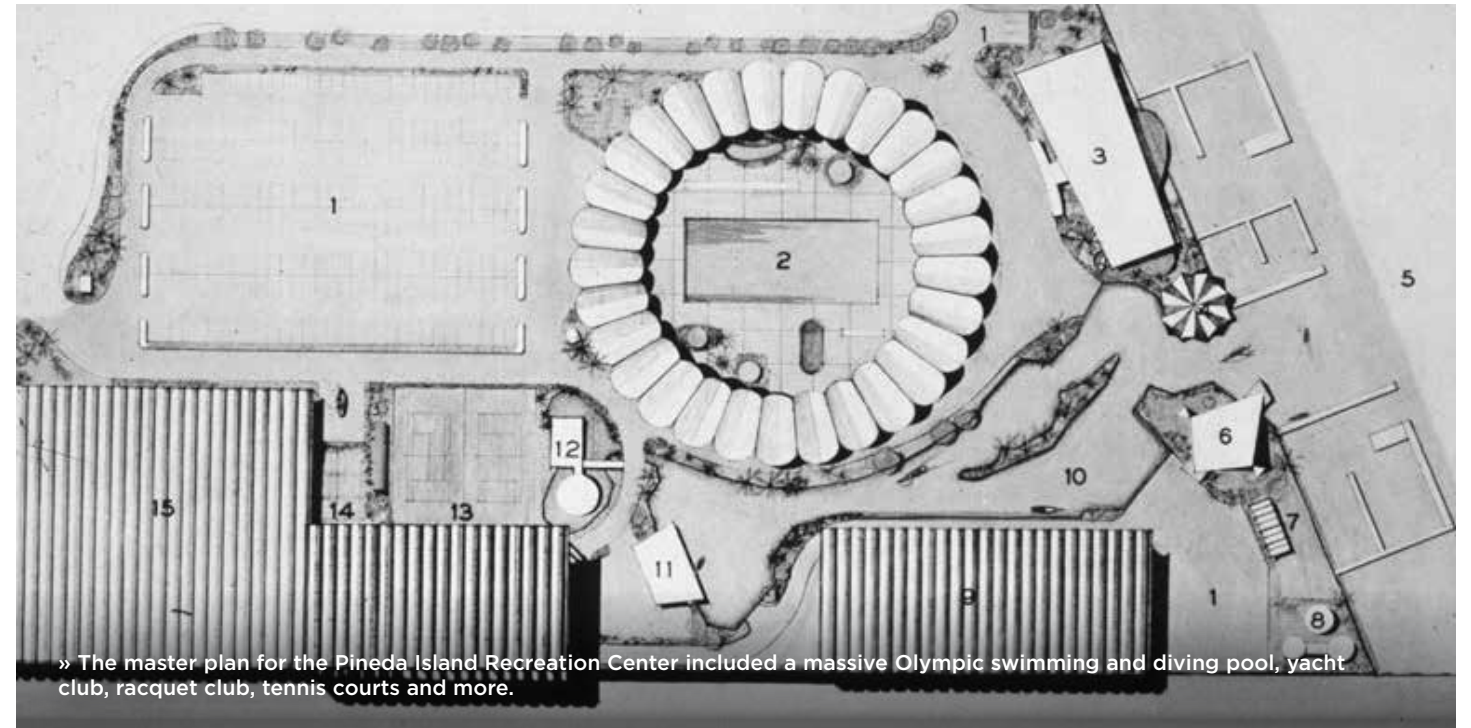
» Chicago architect Bertrand Goldberg (right) discusses a model of Pineda Island with a real estate agent during a 1957 visit to Mobile. As envisioned, the entirety of the island north and south of the Causeway would be developed.

In a 1957 visit to Mobile, Goldberg told reporters, "Everything was taken into consideration when we started planning Pineda Island five years ago. In our plans, we have made areas available for education, religion, recreation, employment, and service—all within the radius of the home."

The development would include all of the island, north and south of the Causeway. Plans called for no fewer than 3,000 homes—all waterfront—on the rivers, bays, lagoon or canals to be dredged. In addition, Pineda would feature a marina and yacht club with food and bar service, served by an eight-foot deep canal connecting the Blakeley River with an interior lagoon; a nine-hole golf course and putting green; the island's own airport with a 2,700-foot runway; tennis courts and racquet club; swimming pools; bowling alley; schools; churches and a religious park; a shopping center with an International Trade Fair selling goods from around the world; and a "Miracle Mile," a mile-long, 600-foot deep industrial zone for businesses, including light manufacturing.

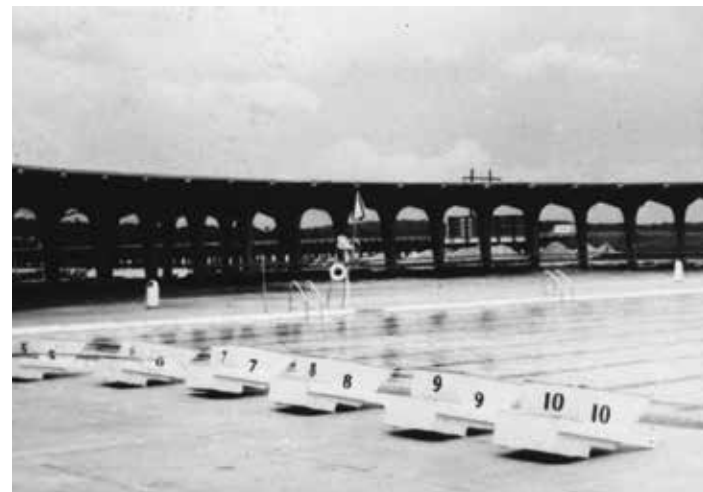
Goldberg's November 1957 visit coincided with the opening of the first model home. Pineda Island also included a half-mile of seawall, a service station and a brand-new Holiday Inn—it was no coincidence that Wilkinson and Holiday Inn founder Kemmons Wilson were friends: both were visionaries. Retired insurance executive Matt Metcalfe described Wilkinson as "bold and imaginative." Wilkinson rubbed a lot of Mobilians the wrong way, though. A brash New Yorker, Wilkinson never wore a coat, tie or hat when such accessories were de rigueur for a businessman. Instead, Metcalfe recalled, Wilkinson went to meetings in "sport clothes and boat shoes. He was a free spirit." He was also successful. Wilkinson, who first came to Mobile in the 1940s, had bought from the Meaher family the raw land surrounding the Mobile Country Club and golf course and proceeded to develop it into one of the most desired neighborhoods in the city at the time—even naming Wilkinson Way after himself. He established Big Standard Automotive next to Barton Academy and was one of the first car dealers to recognize and use the power of television advertising. Wilkinson next opened the nation's most successful Packard dealership across the street. He started Pan Coastal Insurance Co. in 1953, the year after Kemmons Wilson opened the first Holiday Inn in Memphis. And Wilkinson soon held exclusive rights to all Holiday Inns to be built outside the United States.

The first phase of Pineda Island, the Pineda Island Recreation Center, which included an Olympic-size swimming and diving pool, opened in 1960, but new home construction at the development was lagging. Only



» The master plan for the Pineda Island Recreation Center included a massive Olympic swimming and diving pool, yacht club, racquet club, tennis courts and more.

a handful of houses had been built. The required permits for septic tanks were not forthcoming from Baldwin County, and money and enthusiasm for the project began to wane. Pineda Island, city of the future, was shuttered in 1961. "The project was about 50 years ahead of its time," Metcalfe said. "The man envisioned Ft. Lauderdale, and it wasn't Ft. Lauderdale." Today, Pineda includes a number of modest homes and the ruins of the recreation center. Five Rivers Delta Resource Center occupies the majority of the property north of the Causeway, while the land south of the Causeway is given over to Meaher State Park.



» The pool as it looked when the recreation center opened in 1960.

With the financial collapse of Pineda Island, Wilkinson sold Metcalfe the existing houses at favorable terms and eventually moved to Ft. Lauderdale, where he had the Riva boat dealership. Goldberg went on to develop Chicago's iconic Marina City, which proved to be his breakthrough development. He returned to Mobile in the early 1980s as architect of Providence Hospital. And Alonso Álvarez de Pineda? He was no more successful in trying to establish a community than Wilkinson and Goldberg had been. The first European to see Mobile Bay was killed by hostile natives in 1520 while trying to build a settlement on the Pánuco River in Mexico.



» Today, only a few houses and the ruins of the Olympic pool are reminders of what Pineda Island might have been.

ARRIVALS / SAILINGS

For more details visit asdd.com/arrivalssailing

PORT OF CALL	LINE	FREQUENCY	AGENT
ANTIGUA ST. JOHN'S	OSLO CARIBBEAN CARRIER	MONTHLY	SEACLIFF
ARGENTINA PUERTO MADRYN CAMPANA	G2 OCEAN G2 OCEAN	BI-MONTHLY BI-MONTHLY	NORTON LILLY NORTON LILLY
ARUBA ORANJESTAD	OSLO CARIBBEAN CARRIER	INDUCEMENT	SEACLIFF
BARBADOS BRIDGETOWN	OSLO CARIBBEAN CARRIER	MONTHLY	SEACLIFF
BELGIUM ANTWERP	G2 OCEAN BBC CHARTERING HAPAG-LLOYD (AL4 Service) K LINE (AL4 Service) MAERSK (TA3 Service) MOL (AL4 Service) MSC (TA3 Service) NYK GROUP (AL4 Service) YANG MING LINE (AL4 Service)	BI-MONTHLY BI-MONTHLY WEEKLY WEEKLY WEEKLY WEEKLY WEEKLY WEEKLY WEEKLY	NORTON LILLY NORD SUD NORTON LILLY NORTON LILLY NORTON LILLY NORTON LILLY NORTON LILLY
BELIZE BIG CREEK	OSLO CARIBBEAN CARRIER	MONTHLY	SEACLIFF
BRAZIL PARANAGUA PORTOCEL	G2 OCEAN SAGA WELCO G2 OCEAN	BI-MONTHLY MONTHLY MONTHLY	NORTON LILLY INCHCAPE NORTON LILLY
PRAIA MOLE	G2 OCEAN SAGA WELCO	MONTHLY MONTHLY	NORTON LILLY INCHCAPE
RIO DE JANEIRO SANTOS	G2 OCEAN G2 OCEAN SAGA WELCO	MONTHLY MONTHLY MONTHLY	NORTON LILLY NORTON LILLY INCHCAPE
CHILE ARICA LIRQUEN SAN ANTONIO	G2 OCEAN G2 OCEAN G2 OCEAN	INDUCEMENT INDUCEMENT INDUCEMENT	NORTON LILLY NORTON LILLY NORTON LILLY
CHINA DAGANG	MAERSK (TP18 Service) MSC (LONE STAR Service) CMA CGM (PEX 3 Service) COSCO (PEX 3 Service) COSCO (GME Service) EVERGREEN (PEX 3 Service) MAERSK (TP18 Service) MSC (LONE STAR Service) OOCL (PEX 3 Service) CMA CGM (PEX 3 Service) COSCO (PEX 3 Service) COSCO (GME Service) EVERGREEN (PEX 3 Service) MAERSK (TP18 Service) MSC (LONE STAR Service) OOCL (PEX 3 Service) HOEGH	WEEKLY WEEKLY WEEKLY WEEKLY WEEKLY WEEKLY WEEKLY WEEKLY WEEKLY WEEKLY WEEKLY WEEKLY WEEKLY WEEKLY WEEKLY WEEKLY MONTHLY	NORTON LILLY NORTON LILLY NORTON LILLY NORTON LILLY NORTON LILLY NORTON LILLY NORTON LILLY NORTON LILLY NORTON LILLY NORTON LILLY NORTON LILLY NORTON LILLY NORTON LILLY NORTON LILLY NORTON LILLY NORTON LILLY NORTON LILLY
NINGBO	MAERSK (TP18 Service) MSC (LONE STAR Service) CMA CGM (PEX 3 Service) COSCO (PEX 3 Service) COSCO (GME Service) EVERGREEN (PEX 3 Service) MAERSK (TP18 Service) MSC (LONE STAR Service) OOCL (PEX 3 Service) WILLENIUS WILHELMSEN CMA CGM (PEX 3 Service) COSCO (PEX 3 Service) EVERGREEN (PEX 3 Service) OOCL (PEX 3 Service)	WEEKLY WEEKLY WEEKLY WEEKLY WEEKLY WEEKLY WEEKLY WEEKLY WEEKLY BI-MONTHLY WEEKLY WEEKLY WEEKLY WEEKLY	NORTON LILLY NORTON LILLY NORTON LILLY NORTON LILLY NORTON LILLY NORTON LILLY NORTON LILLY NORTON LILLY NORTON LILLY WILHELMSEN SHIP SERVICE NORTON LILLY NORTON LILLY NORTON LILLY
SHANGHAI	MAERSK (TP18 Service) MSC (LONE STAR Service) OOCL (PEX 3 Service) WILLENIUS WILHELMSEN COSCO (GME Service) MAERSK (TP18 Service) MSC (LONE STAR Service) COSCO (GME Service) MAERSK (TP18 Service) MSC (LONE STAR Service)	WEEKLY WEEKLY WEEKLY WEEKLY WEEKLY WEEKLY WEEKLY WEEKLY WEEKLY WEEKLY	NORTON LILLY NORTON LILLY NORTON LILLY NORTON LILLY NORTON LILLY NORTON LILLY NORTON LILLY NORTON LILLY NORTON LILLY NORTON LILLY
SHEKOU	WILLENIUS WILHELMSEN CMA CGM (PEX 3 Service) COSCO (PEX 3 Service) EVERGREEN (PEX 3 Service) OOCL (PEX 3 Service)	BI-MONTHLY WEEKLY WEEKLY WEEKLY WEEKLY	WILHELMSEN SHIP SERVICE NORTON LILLY NORTON LILLY NORTON LILLY
TIANJIN XIAMEN	WILLENIUS WILHELMSEN COSCO (GME Service) MAERSK (TP18 Service) MSC (LONE STAR Service) COSCO (GME Service) MAERSK (TP18 Service) MSC (LONE STAR Service)	BI-MONTHLY WEEKLY WEEKLY WEEKLY WEEKLY WEEKLY WEEKLY	WILHELMSEN SHIP SERVICE NORTON LILLY NORTON LILLY NORTON LILLY NORTON LILLY NORTON LILLY NORTON LILLY
YANTIAN	MAERSK (TP18 Service) MSC (LONE STAR Service)	WEEKLY WEEKLY	NORTON LILLY NORTON LILLY
COLOMBIA BARRANQUILLA CARTAGENA SANTA MARTA	DAN GULF SHIPPING DAN GULF SHIPPING DAN GULF SHIPPING	INDUCEMENT INDUCEMENT EVERY 3 WEEKS	LOTT SHIP LOTT SHIP LOTT SHIP

PORT OF CALL	LINE	FREQUENCY	AGENT
CURACAO WILLEMSTAD	OSLO CARIBBEAN CARRIER	INDUCEMENT	SEACLIFF
DOMINICA ROSEAU	OSLO CARIBBEAN CARRIER	MONTHLY	SEACLIFF
DOMINICAN REPUBLIC CAUCEDO	MSC (CGX Service) ZIM (CGX Service) OSLO CARIBBEAN CARRIER	WEEKLY WEEKLY MONTHLY	NORTON LILLY GLOVIS AMERICA SEACLIFF
PUERTO PLATA	OSLO CARIBBEAN CARRIER	MONTHLY	SEACLIFF
RIO HAINA	OSLO CARIBBEAN CARRIER	WEEKLY	SEACLIFF
ECUADOR PUERTO BOLIVAR	G2 OCEAN	INDUCEMENT	NORTON LILLY
GUAYAQUIL	G2 OCEAN	INDUCEMENT	NORTON LILLY
ENGLAND FELIXSTOWE	MAERSK (TA3 Service) MSC (TA3 Service) G2 OCEAN HAPAG-LLOYD (AL4 Service) K LINE (AL4 Service) MOL (AL4 Service) NYK GROUP (AL4 Service) YANG MING LINE (AL4 Service)	WEEKLY WEEKLY INDUCEMENT WEEKLY WEEKLY WEEKLY WEEKLY WEEKLY	NORTON LILLY NORTON LILLY NORTON LILLY NORTON LILLY NORTON LILLY NORTON LILLY
LIVERPOOL SOUTHAMPTON			
FRANCE BOULOGNE LA HAVRE	G2 OCEAN HAPAG-LLOYD (AL4 Service) K LINE (AL4 Service) MAERSK (TA3 Service) MOL (AL4 Service) MSC (TA3 Service) NYK GROUP (AL4 Service) YANG MING LINE (AL4 Service) G2 OCEAN	MONTHLY WEEKLY WEEKLY WEEKLY WEEKLY WEEKLY WEEKLY WEEKLY BI-MONTHLY	NORTON LILLY NORTON LILLY NORTON LILLY NORTON LILLY NORTON LILLY NORTON LILLY NORTON LILLY NORTON LILLY
SETE			
GERMANY BREMEN	G2 OCEAN BBC CHARTERING HAPAG-LLOYD (AL4 Service) K LINE (AL4 Service) MAERSK (TA3 Service) MOL (AL4 Service) MSC (TA3 Service) NYK GROUP (AL4 Service) YANG MING LINE (AL4 Service)	BI-MONTHLY BI-MONTHLY WEEKLY WEEKLY WEEKLY WEEKLY WEEKLY WEEKLY WEEKLY	NORTON LILLY NORD SUD NORTON LILLY NORTON LILLY NORTON LILLY NORTON LILLY NORTON LILLY
BREMENHAVEN			
HAMBURG	BBC CHARTERING	BI-MONTHLY	NORD SUD
GRENADA SAINT GEORGE'S	OSLO CARIBBEAN CARRIER	MONTHLY	SEACLIFF
GUADELOUPE BASSE TERRE	OSLO CARIBBEAN CARRIER	MONTHLY	SEACLIFF
GUYANA GEORGETOWN	DAN GULF SHIPPING	INDUCEMENT	LOTT SHIP
HAITI PORT AU PRINCE	OSLO CARIBBEAN CARRIER	BI-MONTHLY	SEACLIFF
HONG KONG	CMA CGM (PEX 3 Service) COSCO (PEX 3 Service) EVERGREEN (PEX 3 Service) OOCL (PEX 3 Service)	WEEKLY WEEKLY WEEKLY WEEKLY	NORTON LILLY NORTON LILLY
ITALY LIVORNO MONFALCONE NAPLES SAVONA	G2 OCEAN G2 OCEAN G2 OCEAN G2 OCEAN	MONTHLY MONTHLY MONTHLY MONTHLY	NORTON LILLY NORTON LILLY NORTON LILLY NORTON LILLY
JAMAICA KINGSTON	MSC (CGX Service) OSLO CARIBBEAN CARRIER ZIM LINES (CGX Service)	WEEKLY MONTHLY WEEKLY	NORTON LILLY SEACLIFF GLOVIS AMERICA
JAPAN IYOMISHIMA NIIGATA TAGONOURA TOKYO	SAGA WELCO SAGA WELCO SAGA WELCO SAGA WELCO	INDUCEMENT INDUCEMENT INDUCEMENT INDUCEMENT	INCHCAPE INCHCAPE INCHCAPE INCHCAPE

PORT OF CALL	LINE	FREQUENCY	AGENT
KOREA BUSAN	CMA CGM (PEX 3 Service) COSCO (PEX 3 Service) EVERGREEN (PEX 3 Service) OOCL (PEX 3 Service) MAERSK (TP18 Service) MSC (LONE STAR Service)	WEEKLY WEEKLY WEEKLY WEEKLY WEEKLY WEEKLY	NORTON LILLY NORTON LILLY
INCHON KUNSAN MASAN	SAGA WELCO G2 OCEAN HOEGH	INDUCEMENT INDUCEMENT MONTHLY	NORTON LILLY INCHCAPE NORTON LILLY NORTON LILLY
MARTINIQUE FORT-DE-FRANCE	OSLO CARIBBEAN CARRIER	INDUCEMENT	SEACLIFF
MEXICO ALTIMIRA CHARTERING	CLIPPER STEEL SERVICES	INDUCEMENT	AMERICAN SHIPPING &
COATZACOALCOS TAMPICO CHARTERING VERACRUZ	HAPAG-LLOYD (AL4 Service) K LINE (AL4 Service) MOL (AL4 Service) NYK GROUP (AL4 Service) YANG MING LINE (AL4 Service) CG RAILWAY CLIPPER STEEL SERVICES	WEEKLY WEEKLY WEEKLY WEEKLY WEEKLY EVERY 4 DAYS WEEKLY	NORTON LILLY NORTON LILLY
HAPAG-LLOYD (AL4 Service) K LINE (AL4 Service) MOL (AL4 Service) NYK GROUP (AL4 Service) YANG MING LINE (AL4 Service)		WEEKLY WEEKLY WEEKLY WEEKLY WEEKLY	NORTON LILLY NORTON LILLY
MONTSERRAT PLYMOUTH	OSLO CARIBBEAN CARRIER	INDUCEMENT	SEACLIFF
NETHERLANDS ROTTERDAM	G2 OCEAN MAERSK (TA3 Service) MSC (TA3 Service)	BI-MONTHLY WEEKLY WEEKLY	NORTON LILLY NORTON LILLY NORTON LILLY
PERU CALLAO	G2 OCEAN	INDUCEMENT	NORTON LILLY
POLAND GDYNIA	G2 OCEAN	MONTHLY	NORTON LILLY
SINGAPORE, SG	CMA CGM (PEX 3 Service) COSCO (PEX 3 Service) EVERGREEN (PEX 3 Service) OOCL (PEX 3 Service)	WEEKLY WEEKLY WEEKLY WEEKLY	NORTON LILLY NORTON LILLY
SPAIN MOTRIL	G2 OCEAN	MONTHLY	NORTON LILLY
ST. KITTS BASSETERRE	OSLO CARIBBEAN CARRIER	INDUCEMENT	SEACLIFF
ST. LUCIA CASTRIES VIEUX FORT	OSLO CARIBBEAN CARRIER OSLO CARIBBEAN CARRIER	MONTHLY MONTHLY	SEACLIFF SEACLIFF
ST. MARTIN PHILIPSBURG	OSLO CARIBBEAN CARRIER	INDUCEMENT	SEACLIFF
ST. THOMAS CHARLOTTE AMALIE	OSLO CARIBBEAN CARRIER	INDUCEMENT	SEACLIFF
ST. VINCENT KINGSTOWN	OSLO CARIBBEAN CARRIER	MONTHLY	SEACLIFF
SURINAME PARAMARIBO	DAN GULF SHIPPPING	INDUCEMENT	LOTT SHIP
TOBAGO SCARBOROUGH	OSLO CARIBBEAN CARRIER	MONTHLY	SEACLIFF
TRINIDAD PT LISAS PT LISAS	OSLO CARIBBEAN CARRIER DAN GULF	MONTHLY MONTHLY	SEACLIFF LOTT SHIP
TURKEY LIMAS	G2 OCEAN	BI-MONTHLY	NORTON LILLY
VENEZUELA GUANTA MARACAIBO	DAN GULF SHIPPING DAN GULF SHIPPING	MONTHLY INDUCEMENT	LOTT SHIP LOTT SHIP

PORT OF MOBILE DIRECTORY

AIR CARGO

FEDEX EXPRESS BFMR/AGFS (251) 432-6705

ALABAMA INTERNATIONAL TRADE CENTER

ALABAMA WORLD BUSINESS CTR.—
1500 Resource Dr., Birmingham, AL 35242..... (205) 250-4747
UNIVERSITY OF ALABAMA—Tuscaloosa—P. O. Box 870396..... (205) 348-7621

AUXILIARY SERVICES

CATHOLIC MARITIME CLUB—406 Government St., Mobile, AL..... (251) 432-7339
Deacon John Archer, Director; Father Lito Capeding, Chaplain
FISHERS OF MEN MINISTRIES INTERNATIONAL..... (251) 233-6621
INTERNATIONAL SEAMAN'S CENTER—605 Texas Street..... (251) 433-7953

BANKS WITH INTERNATIONAL DEPARTMENTS

BB&T—MOBILE..... (251) 340-8706
BBVA COMPASS BANK, RYAN NEW..... (251) 470-7408
FIRST COMMERCIAL BANK—BIRMINGHAM..... (205) 868-6171
HANCOCK/WHITNEY BANK—MOBILE..... (251) 662-1025
REGIONS BANK—MOBILE..... (251) 690-1187

BARGE FLEETING SERVICE

DELTA MARINE SERVICE..... (251) 937-4060
HIGMAN MARINE SERVICES, INC..... (251) 433-1732

BLAST FREEZE/COLD STORAGE

SEANOUS..... (251) 433-7399

BULK LIQUIDS

ALABAMA BULK TERMINALS..... (251) 438-9891
ARC TERMINALS..... (251) 421-1651
GULF COAST ASPHALT (251) 432-7666
NUSTAR (251) 456-8491
PLAINS MARKETING (251) 456-4688; (251) 377-8864
RADCLIFF/ECONOMY MARINE SERVICES..... (251) 433-0066

BUNKERING SERVICE

ATLANTIC GULF BUNKERING..... (251) 431-5900
BUFFALO MARINE (713) 923-5571
MIDSTREAM FUEL SERVICES, INC.—P. O. Box 2826 (251) 433-4972
RADCLIFF/ECONOMY MARINE SERVICES—P. O. Box 3064..... (251) 433-0066
SECTOR ENERGY MANAGEMENT—P. O. Box 2426, Mobile 36652 (251) 423-1020
UNITY BUNKERING INC. (251) 929-5153

CAB SERVICE

A-1 Taxi & Transportation..... (251) 214-4889
UBER.....www.uber.com

CONSULATES

CONSULAR CORPS OF MOBILE—6204 Brandy Run North 36608..... (251) 455-8182
BOLIVIA—Thomas J. Purvis—3413 Canacee Dr..... (251) 666-6969
DENMARK—Martin H. Cunningham—205 St. Louis St..... (251) 432-4633
DOMINICAN REPUBLIC—Luis Frias—951 Government St., Suite 520..... (251) 432-2332
FRANCE—Maxanna Nichols—18 Houston St. (251) 366-0051
NORWAY—L. H. Stuart, Jr.—6204 Brandy Run Road N. (251) 342-2151

CONTAINER REPAIR & LEASING

AFFORDABLE CONEX..... (251) 947-1944
CHICKASAW CONTAINER SERVICES, INC. (251) 457-7300
DOCKSIDE SERVICES (251) 438-2362
JOHN FAYARD MOVING & WAREHOUSING..... (866) 862-0867
EXSIF WORLDWIDE, INC..... (800) 231-7781
★MILLER TRANSPORTERS..... (251) 457-0471
TANK SOLUTIONS, INC..... (888) 551-8265

U.S. CUSTOMS & BORDER PROTECTION

PORT DIRECTOR—150 N. Royal St., Suite 3004 (251) 441-5111

DUNNAGE — PLYWOOD

ALL*STAR FOREST PRODUCTS, INC.—7096 Stone Dr., Daphne 36526... (251) 626-8777
BIG RIVER CYPRESS & HARDWOOD (850) 674-5991
BUCHANAN LUMBER—104 Industrial Canal Rd. East..... (251) 433-9567
CASSIDEY LUMBER—P. O. Box 391, Mobile 36601..... (251) 456-0099
McGINNIS LUMBER COMPANY, INC.—P.O. Box 2049 Meridian, MS 39302(601) 483-3991
MIDWAY FOREST PRODUCTS—P. O. Box 7667, Spanish Ft., 36527 (251) 626-8010
SMITH COMPANIES—100 Pardue Rd. Pelham 35124 (800) 322-0540

EXPORT BAGGING, PACKING AND DRUMMING

CUSTOM MARKETING SERVICES INC..... (205) 668-4042
HORIZON FREIGHT (800) 242-9212
MEADOR WAREHOUSING & DIST., INC.—1750 N. Craft Hwy..... (251) 457-4376
MITCHELL CONTAINER SERVICES.—226 Saraland Blvd. S..... (251) 675-3786
MMS PACKAGING COMPANY—P. O. Box 2066..... (251) 438-3658
PORT CITY MOVERS & DELIVERY—
5235 Kooiman Rd., Bldg. 4, Theodore, AL..... (251) 342-7079
STEM PRODUCTS—P. O. Box 66531..... (251) 457-5557
L. H. STUART CO., INC.—2064 Ave. C, Brookley..... (251) 441-0770
TEAGUE BROS. TRANSFER & STG. CO.—519 Bayshore Ave..... (251) 476-6122
WONDERLAND EXPRESS..... (251) 653-7348

FIRE SAFETY EQUIPMENT AND SERVICE

FIRETROL PROTECTION SYSTEMS, INC..... (251) 661-1699
HILLER SYSTEMS, INC.—3751 Joy Springs Drive..... (251) 661-1275

INTERNATIONAL FIRE PROTECTION, INC.—5462 Able Court..... (800) 554-9695
R. CARTER & ASSOC., INC.—P.O. Box 902..... (251) 452-0154
SAFETY SOURCE INC.—6161 Rangeline Road..... (251) 443-7445
UNITOR SHIP SERVICES—500 St. Louis St..... (251) 432-0762
WORLD SHIP SUPPLY (MOBILE), INC.—
4600-B Cypress Business Park Drive..... (251) 662-7474

FOREIGN FREIGHT FORWARDERS (★H CUSTOM HOUSE BROKERS)

★AIR/SEA FORWARDING—3812 Springhill Ave..... (251) 460-0551
C.H. ROBINSON WORLDWIDE (251) 441-7012
★N.D. CUNNINGHAM—205 St. Louis St..... (251) 432-4633
EMO TRANS..... (251) 342-3313
★EXPEDITORS INTERNATIONAL..... (251) 431-4992
FEDEX TRADE NETWORKS..... (404) 831-8237
INCHCAPE SHIPPING SERVICES, INC.—11 N. Water St., Mobile, AL..... (251) 461-2700
JENSEN SHIPPING CO.—244 W. Valley Ave., Birmingham, AL (205) 328-2343
★JOHN M BRINING CO., INC.—202 Congress St., Mobile, AL..... (251) 432-9741
KUEHNE + NAGEL—2101 Clinton Ave. W., Ste. 403, Huntsville, AL..... (205) 516-1402
★CAROLE C. LELAND—244 W. Valley Ave., Birmingham, AL..... (205) 328-2343
★CTB USA OF FLORIDA..... (866) 621-0091 ext. 224
★RICHARD MURRAY & CO.—109 No. Conception St. (251) 432-5549
OEC MOBILE—52 North Jackson St., Mobile, AL 36602..... (251) 287-8767
★PAGE & JONES, INC.—52 N. Jackson St..... (251) 432-1646
Birmingham, P. O. Box 320126..... (205) 595-8429
Huntsville, P. O. Box 6025..... (256) 772-0231
PAUL A. BOULO, INC.—255 N. Joachim St., Mobile, AL..... (251) 433-5445
T. A. PROVENCE & CO.—P. O. Box 942..... (251) 433-5424
★GEO. RUEFF, INC.—P. O. Box 2962..... (251) 433-8851
STIEGLER SHIPPING CO., INC.—1151 Hillcrest Rd., Suite F..... (251) 639-7300
TEAM WORLDWIDE—799 James Record Rd., Ste. A-12, Huntsville, AL (251) 461-7770
TRADELANES—61 St. Joseph St., Suite 1000 (251) 343-8031
TRANSGROUP MOB..... (251) 433-7668
TRANSGROUP WORLDWIDE LOGISTICS ~ 162 State St. 36602..... (251) 433-7668
★W.R. ZANES & CO. OF LA, INC.—P. O. Box 1006..... (251) 438-1597

FOREIGN TRADE ZONES

(★FTZ PUBLIC WAREHOUSES)
BALDWIN TRANSFER CO., INC..... (251) 433-3391
MOBILE, AL—Brookley Complex & Airport..... (251) 438-7338
AZALEA BOX COMPANY—1401 St. Stephens Road, Prichard (251) 452-3451
EQUITY TECHNOLOGIES CORP..... (251) 432-7784
★KEYPORT WAREHOUSING—30427 County Rd. 49 N, Loxley, AL (251) 964-4607
★MERCHANTS TRANSFER COMPANY..... (251) 457-8691
★MOBILE MOVING & STORAGE..... (251) 438-3658
★HUNTSVILLE, AL—P. O. Box 6241..... (256) 772-3105
★BIRMINGHAM, AL—Shaw Warehouses..... (205) 251-7188
S/M WAREHOUSE..... (251) 679-3344
HODGES WAREHOUSE—MONTGOMERY (251) 280-2033

GRAIN MERCHANTS

FGDI, LLC..... (419) 373-6311

LICENSED GUARD SERVICE

ALABAMA LINE SERVICES..... (251)-661-1205
ADMIRAL SECURITY SERVICES OF ALABAMA, INC..... (251) 725-6018
U.S. MARITIME SECURITY, LLC..... (251) 459-1578

HEAVY LIFT/SALVAGE/TRANSPORTATION

1ST CRANE & LOGISTICS, INC—Alabama State Docks (251)-653-3333
ACME TRUCK LINE..... (251)-653-6028
AMERICAN MARINE SERVICES..... (251) 406-9930
ARGOSY TRANSPORTATION GROUP—www.argosyship.com..... (713) 668-3388
ATLANTIC SPECIALIZED TRANSPORT (251) 433-4545
BARNHART CRANE & RIGGING—P.O. Box 2809, Daphne, AL 36526.. (251) 654-0541
BLUE DIVING & SALVAGE—4032 Dauphin Island Pkwy., Mobile, AL. (800) 882-5043
BOSARGE DIVING—Pascagoula, MS..... (888) 762-6364
BURKHALTER SPECIALIZED TRANSPORT (228) 762-0888
CRANE RENTAL CORP.—30105 Hwy 59, Loxley, AL 36551..... (800) 368-8956
HORIZON FREIGHT (800) 242-9212
HYDRAULIC CRANE SPECIALISTS (251) 675-000X
LEA DIVING & SALVAGE—Alabama State Docks..... (251) 432-4480
MAMMOET..... (404) 696-4982
★MILLER TRANSPORTERS..... (251) 457-0471
WONDERLAND EXPRESS..... (251) 653-7348

INDUSTRIAL DIVING

BLUE DIVING & SALVAGE—4032 Dauphin Island Pkwy., Mobile, AL..... (800) 882-5043
BOSARGE DIVING—Pascagoula, MS..... (228) 762-0888
COMMERCIAL DIVING SERVICES INC.—
P. O. Box 850637, Mobile, AL 36685..... (251) 665-0017
FATHOM INDUSTRIES—5385 Battleship Parkway, Spanish Fort, AL (251) 626-7800
LEA DIVING & SALVAGE—Alabama State Docks (251) 432-4480
Mosley Maritime Services, LLC (251) 610-7882

LIGHTERING, GAS FREEING AND SPILL CLEANUP

AARON OIL CO., INC.—P. O. Box 2304..... (251) 666-8143
R. CARTER & ASSOC., INC.—507 Diaz St., Prichard, AL..... (251) 452-0154
ES&H—5400-A Willis Rd., Mobile, Ala..... (251) 382-0199
FERGUSON HARBOUR, INC.—31153 Stagecoach Rd., Spanish Ft., AL..... (251) 626-3295
INDUSTRIAL WASTE SERVICES, INC.—1980 Ave. A..... (251) 694-7500
INDUSTRIAL WATER SVCS., INC.—P. O. Box 50236..... (800) 447-3592
LIQUID ENVIRONMENTAL SOLUTIONS MARINE FIELD SERVICES—
1890 3rd St., Mobile (251) 243-4128

OIL RECOVERY CO., INC.—P. O. Box 1803.....	(251) 690-9010
OIL RECOVERY MARINE TERMINAL Blakely Island.....	(800) 350-0443
PROTECT ENVIRONMENTAL—	
3537 Desirrah Drive S., Mobile, AL 36618.....	(251) 470-0955
THOMPSON ENGINEERING—P. O. Box 9637.....	(251) 653-4525
UNITED STATES ENVIRONMENTAL SERVICES LLC—	
4230 Halls Mill Road, Mobile, AL 36693.....	(251) 662-3500
USI OIL —1900-A Broad St.	(251) 432-0775

LINE HANDLING

ALABAMA LINE SERVICES—P. O. Box 9308.....	(251) 661-2105
BERT'S LINE HANDLING—P. O. Box 2213.....	(251) 432-1611
DOCKSIDE SERVICES, INC.—P. O. Box 122.....	(251) 438-2362
MO-BAY SHIPPING SVCS., INC.—P. O. Box 1842.....	(251) 433-1621
PEDERSEN MARINE SERVICE & SUPPLY—662 St. Louis St.	(251) 432-6045
PRESTIGE MARITIME — P.O. Box 1074.....	(251) 680-8833
TRI-STATE MARITIME SVCS.—P. O. Box 2725.....	(251) 432-1054

MARINE FUMIGATION SERVICES

ALLIANCE PEST SOLUTIONS (IMPORT/EXPORT)	CRAIG JAKOB (817) 648-6201
CENTRAL STATES FUMIGATION (IMPORT/EXPORT)	PAT MACK (800) 527-8215
DA MARINE FUMIGATION (IMPORT/EXPORT)	JERRY MATHERNE (504) 888-4941
RESEARCH FUMIGATION (IMPORT/EXPORT)	(985) 536-4932

MARINE RADIO AND ELECTRONICS

★ ELECTRICAL CONTROL AND AUTOMATION)	
ICS—578 Azalea Rd., Mobile, AL.....	(251) 661-6061
GULF COAST AIR & HYDRAULICS INC.—3415 Halls Mill Rd.	(251) 666-6683
MOBILE MARINE RADIO—7700 Rinla Ave.....	(251) 666-5110
Marine Operator.....	(251) 666-3487
Radioteletype.....	(251) 666-9042
Radio Telegram.....	(251) 666-9041
RADIO-HOLLAND USA, INC.—701 S. Conception St.	(251) 432-3109
★PRISM—200 Virginia St.....	(251) 341-1140
SPERRY MARINE SYSTEMS—2756 Dauphin Island Pkwy.....	(251) 471-5008
TEAM ONE COMMUNICATIONS—3360 Key St., Mobile, AL.....	(888) 343-TEAM

MARINE SURVEYORS

ALPHA MARINE SURVEYORS—180 Country Club Dr., Daphne.....	(251) 626-7299
BULK MARINE RESOURCES.....	(251) 695-4838
W. T. AMES & ASSOCIATES—149 Fairway Dr., Daphne.....	(251) 626-1172
GEORGE BROOKFIELD—186 Ridgewood Dr., Daphne.....	(251) 626-1758
M. H. BARRIE—P.O. Box 1164, Mobile, AL 36693.....	(251) 433-8122
C. BAXTER, JR. & ASSOCIATES INT'L, INC.....	(251) 476-1998
RICHARD BESELAAR—2809 Cottage Hill Rd.....	(251) 476-9909
C. E. COLLIER & ASSOCIATES, INC.—5050 Lossing Rd., Coden, AL.....	(251) 873-4382
CAPT. JOHN D. SMITH—P. O. Box 2585, Daphne.....	(251) 626-8394
CARMACK MARINE IND. SVC. INC.—1609 B Rochelle Street.....	(251) 662-5765
COOK CLAIMS SERVICE—P. O. Box 160461.....	(251) 470-0774
GENERAL MARINE SERVICE—P. O. Box 2533.....	(251) 928-6728
C. L. HAMILTON—P.O. Box 302.....	(251) 433-9997
DC MARITIME TECHNOLOGIES INC.—	
2210 Main St., Daphne, AL 36526.....	(251) 625-0503
JOINER MARINE SERVICES—9305 Johnson Rd. S.....	(251) 633-6118
MARINE INSPECTION, LLC—	
63 South Royal Street, Suite 1001, Mobile, AL 36602.....	(251) 375-2020
MOSLEY MARITIME SERVICES, LLC.....	(251) 610-7882
NATIONAL CARGO BUREAU, INC.—	
Commerce Building, Ste. 605, 118 N. Royal St.....	(251) 432-0781
NAUTECH MARINE CONSULTANTS, INC.—	
7226 Bridgewood Lane, Spanish Fort, AL 36527.....	(251)-447-0422
PAGE MARINE—4153 Tamworth Dr.....	(251) 661-1520
PORT CITY MARINE SURVEYORS—D. J. Smith.....	(251) 661-5426
SABINE SURVEYORS—851 East I-65 Service Rd. South.....	(251)-433-9997
SGS MINERALS—P. O. Box 1962.....	(251) 432-2781
SHIP ARCHITECTS, INC.....	(251) 621-1813
WOODRUFF INDUSTRIES INC—4021 Shana Drive.....	(251) 473-5327

MARITIME WASTE DISPOSAL

AARON OIL CO., INC.—P. O. Box 2304.....	(251) 666-8143
BROWNING-FERRIS INDUSTRIES—P. O. Box 16504.....	(251) 666-5724
R. CARTER & ASSOC., INC.—1406 Telegraph Rd.....	(251) 452-0154
DOCKSIDE SERVICES, INC.—P. O. Box 122.....	(251) 438-2362
FCC ENVIRONMENTAL.....	(205) 482-1574
FERGUSON HARBOUR, INC.—31153 Stagecoach Rd., Spanish Ft., AL.....	(251) 626-3295
LIQUID ENVIRONMENTAL SOLUTIONS—1980 Ave. A.....	(251) 694-7500
OIL RECOVERY CO., INC.—P. O. Box 1803.....	(251) 690-9010
PSC.—4531 Hamilton Blvd., Theodore, AL 36582.....	(251) 443-7701
TRASH DOCTORS, LLC.....	(504) 222-2471
WASTE MANAGEMENT INC.—17045 Highway 43, Mt. Vernon, AL.....	(251) 829-4006

MOTOR CARRIERS (★H CONTAINER SERVICES)

1ST CRANE & LOGISTICS, INC—Alabama State Docks.....	(251)-653-3333
AAA COOPER.....	(251) 653-6183
ACCELERATED FREIGHT GROUP.....	(800) 242-0952
★ACME TRUCK LINE.....	(251) 653-6028
ADMIRAL MERCHANTS MOTOR FREIGHT.....	(877) 859-4577
A.I.M. LOGISTICS A T.G. MERCER COMPANY.....	(225) 303-6012
ALABAMA CARRIERS, INC.....	(800) 721-7107
ARGOSY TRANSPORTATION.....	(713) 668-3388
ASF INTERMODAL LLC.....	(251) 287-8152
A&S KINARD.....	(769) 572-7144
AVERRITT EXPRESS.....	(251) 443-7703
AVONDALE CONTAINERS.....	(251) 438-2248
★BALDWIN TRANSFER CO.....	(251) 433-3391
BARNHART CRANE & RIGGING.....	(251) 654-0541
BELLCOR LOGISTICS.....	(251) 802-8558
BENNETT MOTOR EXPRESS.....	(251) 635-0048
★BILLY BARNES ENTERPRISES.....	(800) 788-9333

BOYD BROTHERS TRANSPORTATION, INC.....	(205) 716-2014
BR WILLIAMS TRUCKING WAREHOUSING & LOGISTICS.....	(800) 523-7963
BUFFALO WOOD, INC.....	(601) 645-5965
BURKHALTER SPECIALIZED TRANSPORT.....	(877) 815-8334
★CALIFORNIA CARTAGE EXPRESS.....	(251) 287-2412
C.H. ROBINSON WORLDWIDE.....	(251) 441-7012
★CHICKASAW CONTAINER SERVICES, INC.....	(251) 457-7300
CHOCTAW TRANSPORT COMPANY.....	(251) 457-9231
CONSOLIDATED FREIGHT WAYS.....	(251) 442-9100
COVAN WORLD-WIDE MOVING INC.....	(251) 653-3008
COYOTE LOGISTICS, LLC.....	(888) 805-2883
CUSTOM MARKETING SERVICES INC.....	(205) 668-4042
DAVIS TRANSPORTATION.....	(251) 214-1377
DEEP SOUTH FREIGHT.....	(800) 824-3515
★DIXIE DRAYAGE.....	(800) 321-0801
DOCKSIDE SERVICES INC.....	(251) 438-2362
DOLPHIN LINE INC.....	(251) 666-2057
E & F TRANSPORTATION, INC.....	(251) 621-0121
★EASTMAN LOGISTICS.....	(800) 228-9595
ED MORRIS MOVING & HAULING.....	(251) 457-7734
★ESTES-EXPRESS.....	(251) 964-4801
FEDEX.....	(800) 762-3787
FIKES TRUCK LINE, INC.....	(800) 643-6611
FINCH DISTRIBUTION.....	(800) 844-5381
FRIESE HAULING INC.....	(800) 654-4811
GENERATIONS UNITED LLC.....	(251) 404-6054
GLOBAL MARITIME LOGISTICS LLC.....	(251) 432-2000
★GULF COAST INTERMODAL.....	(251) 653-1880
HANNA TRUCK LINES.....	(205) 783-8200
HARBOUR RESOURCES LLC.....	(251) 338-9151
HI-GEAR EXPRESS, INC.....	(251) 259-5362
HISPEED TRANSPORT INC.—2017 4th St. SW., Cullman AL 35057.....	(256) 739-9194
HODGES LOGISTICS.....	(334) 280-2033

★HORIZON FREIGHT SYSTEMS.....	(800) 242-9212
HORNADY TRANSPORTATION LLC.....	(800) 633-1313
HTP LOGISTIC MANAGEMENT.....	(251) 666-4766
ICE LINE LOGISTICS, LLC—	
1321 Foster Avenue, Nashville, TN 37210.....	(615) 782-7200
★INDUSTRIAL TRANSPORTATION.....	(800) 626-5682
INTEGRATED TRANSPORT LLC.....	(334) 354-3339
INTERSTATE FREIGHT USA.....	(205) 338-9595
J.A. LOGISTICS INC.....	(334) 371-5506
JAMES CARTAGE CO.....	(251) 457-1534
JIM NEWSON TRUCKING (Salvage Buyer).....	(800) 748-8931
★JOHN FAYARD MOVING & WAREHOUSING.....	(866) 862-0867
KNIGHT TRANSPORTATION.....	(678) 596-8678
LANDSTAR RANGER.....	(251) 690-9050
★LARSEN INTERMODAL SERVICES, INC.....	(800) 949-8501
MACROTRANSPORT SERVICES—Ormond Beach, FL.....	(203) 926-8911
MARITIME & COMMODITY SERVICES, LLC.....	(251) 432-0511
McCARRON SERVICES, LLC.....	(251) 406-2335
MEADOR WAREHOUSING DIST., INC.....	(251) 457-4376
MERCER TRANSPORTATION.....	(251) 300-6060
MILAN EXPRESS CO., INC.....	(251) 456-8571
MILLER TRANSER AND RIGGING—1891 Ninth St., Mobile, AL.....	(251) 418-4090
★MILLER TRANSPORTERS.....	(251) 457-0471
MILS GULFCOAST TRANSLOAD & DISTRIBUTION.....	(601) 709-8003
MMS TRANSPORTATION CO.....	(251) 438-3658

MOBILE BAY TRANSPORTATION COMPANY—	
D/B/A YELLOW CAB.....	(251) 476-7711
★OLD DOMINION FREIGHT LINES, INC.....	(877) 666-7485
★OVERNITE TRANSPORTATION CO.....	(251) 456-6545
P&S TRANSPORTATION.....	(205) 788-4000
PRECISION TRANSPORTATION.....	(866) 877-5623, FAX: (601) 898-0553
PGT TRUCKING, INC.....	(888) 372-5710
★POINT LOGISTICS.....	(251) 452-2128
★QUICK DELIVERY SERVICE , INC.....	(251) 471-5369
RACE LOGISTICS INC.....	(251) 210-6614
RENZENBERGER INC.....	(800) 968-8685
★RICHWAY TRANSPORTATION SERVICES.....	(251) 441-7499
ROADWAY EXPRESS.....	(251) 457-9274
ROSS NEELY SYSTEMS, INC.....	(800) 366-3359
SAIA MOTOR LINES.....	(251) 452-5700
SCHNEIDER NATIONAL.....	(800) 558-6767
★SEABREEZE TRUCKING INC.....	(251) 661-3186
SHELTON TRUCKING.....	(251) 690-9294
SOUTHEASTERN FREIGHT LINES, INC.....	(251) 443-1557, (866) 888-7335
SOUTHERN CARTAGE.....	(334) 284-3033
SOUTHERN HAULERS, INC. (Dump Trucks).....	(800) 537-4621
★SOUTHERN INTERMODAL XPRESS INC. (SIX).....	(251) 438-2749
★S/M TRANSPORTATION.....	(251) 679-8200, (888) 546-2013
SPECIALTY TRANSPORTATION CO. (Bulk).....	(888) 467-5737
SUMMA TRANSPORTATION SERVICES.....	(251) 666-6287
★TCI TRANSPORTATION CONSULTANTS, INC.....	(251) 643-9652
★TRANS-STATE LINE.....	(800) 643-2140
TRISM SPECIALIZED CARRIERS.....	(800) 292-3829
VENTURE EXPRESS.....	(251) 653-4947
WATKINS TRUCKING CO., INC.....	(800) 633-8238
WILLIS SHAW FROZEN EXPRESS.....	(251) 661-9420
★WILSON TRUCKING CORP.....	(251) 452-0668, (866) 645-7405
WOERNER TRANSPORTATION.....	(800) 547-6828
WONDERLAND EXPRESS (Heavy Haul).....	(251) 653-7348
WRIGHT TRANSPORTATION, INC.....	(800) 342-4598
XPO LOGISTICS.....	(800) 338-3372
YRC.....	(800) 610-6500

PILOTAGE

MOBILE BAR PILOTS ASSOC.—P. O. Box 831.....	(251) 432-2639
MOBILE INNER HARBOR PILOTS.....	(251) 441-7251

RAIL TRANSPORT

ALABAMA & GULF COAST RR.....	(251) 694-2883
BURLINGTON NORTHERN/SANTA FE.....	(205) 320-3637
CANADIAN NATIONAL/ILLINOIS CENTRAL RAILROAD.....	(800) 342-5424
CG RAILWAY.....	(877) 606-2477
CSX RAIL TRANSPORT.....	(251) 434-1300
KANSAS CITY SOUTHERN.....	(601) 933-4701
NORFOLK SOUTHERN CORP.....	(205) 951-4761
TERMINAL RAILWAY ALABAMA STATE DOCKS.....	(251) 441-7301

SAFETY SPECIALISTS AND CONSULTANTS

BESSELAAR & ASSOCIATES—P. O. Box 16542.....	(251) 476-9909
JOINER MARINE SERVICES—9305 Johnson Rd. S.....	(251) 633-6118
MARITIME SAFETY & SECURITY COUNSEL, LLC.....	(251) 767-9430

SHIP CHANDLERS/SERVICES

AIR GAS GULF STATES—5480 Hamilton Blvd, Theodore, 36582.....	(251) 653-8743
ALABAMA LINE SERVICES—P. O. Box 9308.....	(251) 661-2105
ATLAS MARITIME SERVICES CO.—P. O. Box 2901.....	(251) 432-4533
AUTRY GREER & SONS—2850 W. Main St.....	(251) 457-8655
AZALEA GLASS & MIRROR—251 St. Louis St.....	(251) 434-0000
CTW LAUNDRY/LINEN SVC.—2750 Mauvilla Dr.....	(251) 476-2229
CHINA SHIPPER SUPPLY—456 Dauphin Island Pky.....	(251) 479-7443
CORTNEY COMPANY, INC.....	(888) 267-8639
DIVERSIFIED LIFTING SYSTEMS—Elgg Bertens.....	(800) 752-1214
ENVIRONMENTAL SAFE MARINE & IND. COATINGS—	
Corrosion Control.....	(251) 341-9189
GENERAL MACHINERY, INC.—P. O. Box 5174.....	(251) 473-1588
GLASCOW-MOORES—808 Executive Park Dr.....	(900) 659-7000
GLOBAL SUPPLY CO.—5570 Rangeline Rd., Suite B.....	(251) 443-6456
GULF COAST AIR & HYDRAULICS INC.—3415 Halls Mill Rd.....	(251) 666-6683
GULF COAST MARINE SUPPLY CO.—P. O. Box 2088.....	(251) 452-8066
HILLER SYSTEMS, INC. (Marine Decking / Repair)—	
3751 Joy Springs Drive.....	(251) 661-1275
CHINA SHIPPER SUPPLIES—456 Dauphin Island Parkway.....	(251) 479-5746
KAMIL SHIP SUPPLY—500-504 St. Louis St.....	(251) 432-0762
KENNEDY INDUSTRIAL SUPPLY, INC.—P. O. Box 9939.....	(251) 666-8615
KLOMAR SHIP SUPPLY—P. O. Box 1118.....	(251) 471-1153
L & M WELDING SUPPLY INC.—51 S. Hallett St.....	(251) 432-3615
MARINE & INDUSTRIAL SUPPLY CO.—150 Virginia St.....	(251) 438-4617
MARINE SPECIALTY CO.—111 Short Texas St.....	(251) 432-0581
MIDSTREAM FUEL—P. O. Box 2826.....	(251) 433-4972
MOBILE SHIP CHANDLERY CO.—210 St. Louis St.....	(251) 432-3501
PEDERSEN MARINE SERVICE & SUPPLY—662 St. Louis St.....	(251) 432-6045
PERFORMANCE PERSONNEL SERVICES, LLC—	
881-C Deakle Dr., Mobile, Ala. 36602.....	(251) 405-0067
PORT CITY CLEANERS/K&K ENTERPRISES (Laundry/Repairs).....	(251) 452-0813
SEPARATOR SPARES & EQUIPMENT—	
8610 Highway 188, Irvington, AL.....	(866) 218-0013
SHANGHAI TRADING CO.—2000 Airport Blvd.....	(251) 473-6446
SMITH SERVICES OF ALABAMA—701 Bill Myers Dr.....	(251) 675-0855
SOUTHERN MARINE SUPPLY CO.—1920 Avenue A.....	(251) 432-5657
STANDARD EQUIPMENT CO.—75 Beauregard St.....	(251) 432-1705
WESCO GAS & WELDING SUPPLY—	
940 Martin Luther King Dr., Prichard.....	(251) 457-8681
WILSON DISMUKES (pumps/room AC/generators)—	
2646 Government Blvd.....	(251) 476-9871
WORLD SHIP SUPPLY (MOBILE), INC.—	
5880 I-10 Industrial Pkwy, Theodore.....	(251) 662-7474

SHIPBUILDING AND REPAIRING

ADVANCED INDUSTRIAL MACHINE WORKS, INC.....	(251) 433-1974
AUSTAL USA—P. O. Box 1049.....	(251) 434-8000
BAE SYSTEMS—P. O. Box 3202.....	(251) 690-7100
COOPER MARINE & TIMBERLANDS—P. O. Box 280, Mt. Vernon.....	(251) 829-5063
DEPENDABLE SHEETMETAL.....	(251) 473-3515
GENERAL & MARINE SHEETMETAL—3016 Anton St.....	(251) 452-9500
GULF COAST AIR & HYDRAULICS INC.— 3415 Halls Mill Rd.....	(251) 666-6683
HARRISON BROS. DRY DOCK AND REPAIR—P. O. Box 1843.....	(251) 432-4606
HENRY MARINE SERVICE INC.—887 Cochran Causeway.....	(251) 438-9442
IDEAL MARINE SERVICE—401 St. Emanuel St.....	(251) 432-8962
MARINE & MAINLAND HYDRAULIC SERVICES.....	(251) 479-6081
MARINE SPECIALTY SERVICES (Plumbing & Piping)—	
111 Short Texas St.....	(251) 432-0581
MARINE SYSTEMS INC.—840 Dumaine Rd.....	(251) 456-4507
MASTER MARINE, INC.—P. O. Box 665, Bayou La Batre.....	(251) 824-4151
MOBILE SHIPBUILDING & REPAIR CO.—P. O. Box 2964.....	(251) 456-1880
OFFSHORE-INLAND MARINE & OILFIELD SERVICES.....	(251) 443-5550
SIGNAL SHIP REPAIR, LLC —601 S. Royal St., Mobile.....	(251) 338-7400
THREE MILE DRYDOCK & REPAIR.....	(251) 380-7972
UNIVERSAL MARINE SERVICES, INC.—958 S. Conception St.....	(251) 432-7708
WORLDWIDE MARINE SVCS., INC.—801 Cawthon St.....	(251) 456-6947

SHIPPING REGISTRY

ABS AMERICAS—Regions Bank Bldg.....	(251) 433-8416
BUREAU VERITAS— Richard D. Carmack—1609 B Rochelle Street.....	(251) 662-5765

STEVEDORING COMPANIES

APM TERMINALS.....	
ARGOS CEMENT LCC.....	randycasey@powerincorporated.com • 251-895-5416
CSA EQUIPMENT COMPANY.....	bob.cowart@csaequpt.com • 251-433-0203
CORE INDUSTRIES, INC.....	mbmyles@southernrgroup.com • 251-602-1308
SEAONUS STEVEDORING-MOBILE.....	rsellers@seaonus.com • 251-433-4198
GOLDEN STEVEDORING & LOGISTICS, INC.....	mike@richardsoncompanies.com • 251-432-0081
PREMIER BULK STEVEDORING, LLC.....	mdouglas@premierstevedoring.com • 251-433-1196
RICHARDSON STEVEDORING AND LOGISTICS SERVICES, INC.....	mike@richardsoncompanies.com • 251-432-0081

TRI-STATE MARITIME SERVICES, INC.....	tsmsal@tsmsal.com • tadger@tsmsal.com • 251-432-1054
---------------------------------------	--

TESTING, SAMPLING, WEIGHING, CARGO CERTIFICATION AND

STEAMSHIP AGENCIES & LINES

*AMERICAN SHIPPING AND CHARTERING

107 St. Francis Street, #2470, Mobile, AL 36602
Bartley Wilkins • 251-436-0116
Email: opsmobile@americanshipping.com

*AZTEC MARITIME SERVICE INC.

303 St. Louis Street, Mobile, AL 36602
251-432-7273
Mark Fenton, President
Email: ops@aztecmaritime.com

*BIEHL & COMPANY

118 N. Royal St., Ste. 707A, Mobile, AL 36602
251-432-1605
Joe Withers, Local Manager
Email: ops.mobile@biehlco.com
Columbus Line - Aust/N.Z.
Columbus Line - South America
Concorde Line
Gulf Africa Line
Hinode Lline
National Shipping Co., of Saudi Arabia
Navinter Line
Pan Ocean Line
U. S. Africa Navigation Line

*BLUE WATER SHIPPING COMPANY

1901 Alabama State Docks Blvd., Bldg. 50, Ste. 224
Mobile, AL 36602
Ph: 251-441-0888 • Fax: 251-441-0877
Email: mobile@bluewatershipping.com

*CG RAILWAY

11 North Water St., Ste. 18290, Mobile, AL 36602
Ph: 251-243-9228 • Fax: 251-706-6937
Email: wildkm@intship.com

CMA CGM

CMA-CGM (America) LLC
300 Colonial Parkway, Ste. 325, Roswell, GA 30076
Scot Stinson
Ph: 770-729-6733 Ext. 6733
Email: usa.sstinson@usa.cma-cgm.com
Rebecca Dyson
Ph: 757-961-2394 Ext. 2394
Email: usa.rdyson@usa.cma-cgm.com

*CRIMSON SHIPPING CO., INC.

Ken Wear, Terminal Operations Manager
150 Viaduct Road • Chickasaw, AL 36611
Ph: 251-457-9551 • Fax: 251-457-9597
Email: kenneth.wear@crimsonshipping.com

*FILLETTE, GREEN SHIPPING SVC. (USA) CORP.

261 N. Conception Street, Mobile, AL 36603
P.O. Box 1842, Mobile, AL 36633
Office: 251-375-2224 • Fax 251-423-6813
Cell: 251-379-6597 • Email: mob@fillettegreen.com
Web: fillettegreen.com

*GAC SHIPPING (USA) INC.

2727 Allen Parkway, Ste. 740, Houston, TX 77019
Ph: 713-533-3200 • Fax: 713-533-3220
Email: hub.us@gacworld.com
Tom Nasman, President & CEO
5821 Rangeline Rd., Unit 104 • Theodore, AL 36582
Ph: 251-443-7504 • Fax: 251-443-7507
Adron Allen, Port Manager
Email: Adron.allen@gac.com

*GENERAL STEAMSHIP CORP.

30941 Mill Ln. Suite 6-311 • Spanish Fort, AL 36527
Office: 251-438-5017 (24 hr) • Cell: 251-648-3483
Email: john.kirkpatrick@gensteam.com
John Kirkpatrick Jr, District Manager

GLOVIS AMERICA, INC.

56 Saint Joseph St., Suite 601
Mobile, AL 36602
J.T. Smith, Manager
251-441-7690; Fax: 251-441-7694
ZIM

G2 OCEAN

600 Galleria Parkway, Suite 925
Atlanta, GA 30339
770-226-5900 • Email: atlanta@g2ocean.com

*INCHCAPE SHIPPING SERVICES

11 North Water St.
Suite 9290 • Mobile, 36602
Josie Mock, Manager
Phone: 251-461-2747 • Fax: 251-461-2748

*LBH USA (CISA)

Danny Guthrie, Local Manager
ASD Blvd., Ste. 107
P.O. Box 1083, Mobile, AL 36633
Ph: 251-694-7001 • Email: ops@lbh-usa.com

*LOTT SHIP AGENCY INC.

259 N. Conception, Mobile, 36603 • 251-433-1621
P. O. Box 1802, Mobile, 36601
William B. Lott, President
Stephen G. Havranek, Vice President
operations@lottship.com

*MARITIME ENDEAVORS SHIPPING COMPANY, LTD.

1901 Alabama State Docks Blvd, Building 50,
Suite 109, Mobile, AL 36602
P.O. Box 1064, Mobile, AL 36633
Jason Kernion, operations Manager
Ph: 251-434-9600 • Fax: 251-441-7171
Email: ops-mobile@mescltd.com

*MARINE TRANSPORT COMPANY

One St. Louis Centre, Ste. 1002, Mobile, AL 36602
Ph: 251-591-2320 • Fax: 251-433-9408
Email: operations@martrans.us

MSC MEDITERRANEAN SHIPPING COMPANY (USA) INC.

420 Fifth Avenue, New York, NY, 10018 USA
Ph: 212-764-4800 • Fax: 212-827-1644
www.msc.com
MSC Mediterranean Shipping Company S.A.,
Geneva
Amanda Coates, Sales Account Representative
Ph: 504-837-9396-ext 73034
Cell: 504-615-5753
Email: Amanda.Coates@msc.com

*MENTZ MARITIME AGENCY, INC.

11465 Mockingbird Lane, Fairhope, AL 36532
Ph: 251-610-8800
Email: clientservices@midship.net

*MID-GULF SHIPPING COMPANY, INC.

5128 Mobile South Street, Theodore, AL 36582
Ph: 504-835-1212 • Fax: 504-617-6584

*NORD-SUD SHIPPING, INC.

605 St. Francis Street, Mobile, AL 36602
Robert Harrison
Ph: 251-431-7274 • Fax: 404-348-4380
Cell: 251-895-1506
Email: mobile@nordsudshipping.com
G2 OCEAN

*NORTON LILLY INTERNATIONAL AGENCY

One St. Louis Centre, Ste. 5000, Mobile, AL 36602
Ph: 251-219-3270 • Fax: 251-431-6795
Email: rallen@nortonlilly.com

Maersk
CMA CGM
MSC
COSCO
Hapag-Lloyd
Hoegh
Intermarine
K-Line
NYK
Spliethoff
Big Lift
SK Shipping
Yang Ming

*PAGE & JONES INC.

52 N. Jackson St., Mobile, 36602 • 251-432-1646
Michael B. Lee, President • mlee@pagejones.com
Michael Lee, Jr., Port Operations Manager
agency@pagejones.com
Carnival Line
• Central Gulf
Crowley Lines Services
Intersee
Pelican Cargo Transport
Rickmers Line
SCM Lines
Tata Steel
ThyssenKrupp Veerhaven
Tronox
Ultrabulk
• Waterman

*ROSS MARITIME INC.

Vessel Agency / Maritime Logistics
P.O. Box 1022
Mobile, AL 36633
(251)432-1611
agency@rossmaritimeusa.com
Carl Black - President
Lindsey Rice - Sr. Vice President
Trevor Walters - Vice President
www.rossmaritimeusa.com

*SCHENKER, INC.

301 Government Street • Mobile, AL 36602
David Ransom
832-914-3526

*SEACLIFF AGENCIES, LLC

P. O. Box 1947, Mobile, 36633 • 251-433-1196
Ritchie Macpherson, Manager
rmacpherson@seacliffagency.com
Drummond Coal
Oslo Carribbean Carrier
162 South Lawrence St.
Mobile, AL 36602
teamone@seacliffagency.com

*SEAGULL MARINE INC.

Mobile Middle Bay Port, Bldg. 303 • 251-443-6789
Tim Dardar, Vessell Agent
info@seagullmarine.com

*T. PARKER HOST, INC.

200 South Royal Street • Mobile, AL 36602
Office: 251-433-1536
Mobile: 251-287-5722
Email: mobile@hostagency.com
Web: www.tparkerhost.com

*WILHELMSSEN SHIPS SERVICE

9786 Timber Circle, Suite A4
Daphne, Alabama 36527
Ph: 251-471-2661 • Fax: 251-471-2662
Web: www.wilhelmsen.com/shipsservice
Email: wss.mobile@wilhelmsen.com
Jacob Seale, Ships Agency Manager
Cell: 251-610-3804
Mobile, AL 36606

• WWL

*Licensed Steamship Agencies

RICHARDSON COMPANIES

- STEVEDORING
- DIRECT DISCHARGE
- LOGISTICS
- TRANSLOADING
- WAREHOUSING
- FOREIGN TRADE ZONES
-TRANSPORTATION
(Truck, Rail or Barge)
- PIPE RECONDITIONING



Please call 251-432-0081 for the Alabama location:
Alabama State Docks - Mobile, AL

713-673-1110 for the following locations in Texas:

Port of Houston, Greens Port - Houston, TX
Port of Freeport - Freeport, TX
Newport Terminal - Galveston, TX
Green Transport Facility - Baytown, TX
La Porte Container Facility - La Porte, TX

WWW.RICHARDSONCOMPANIES.COM

ALABAMA STATE
PORT AUTHORITY
MOBILE, AL 36633

Address Service Requested

When Your Ship Comes In, Our Experience Counts



For more than a century, Cooper/T. Smith has been dedicated to providing highly experienced, first-class services while holding down your cost of doing business. Our customers know our obsession with paying attention to detail, coupled with years of experience, will save them money.

And at Cooper/T. Smith, that's the bottom line.



Innovative Solutions since 1905

Stevedoring ♦ Logistics ♦ Tugboats ♦ Midstream Transfers ♦ Terminal Operations ♦ Vessel Repair ♦ Restaurants ♦ Forest Products

www.coopertsmith.com